



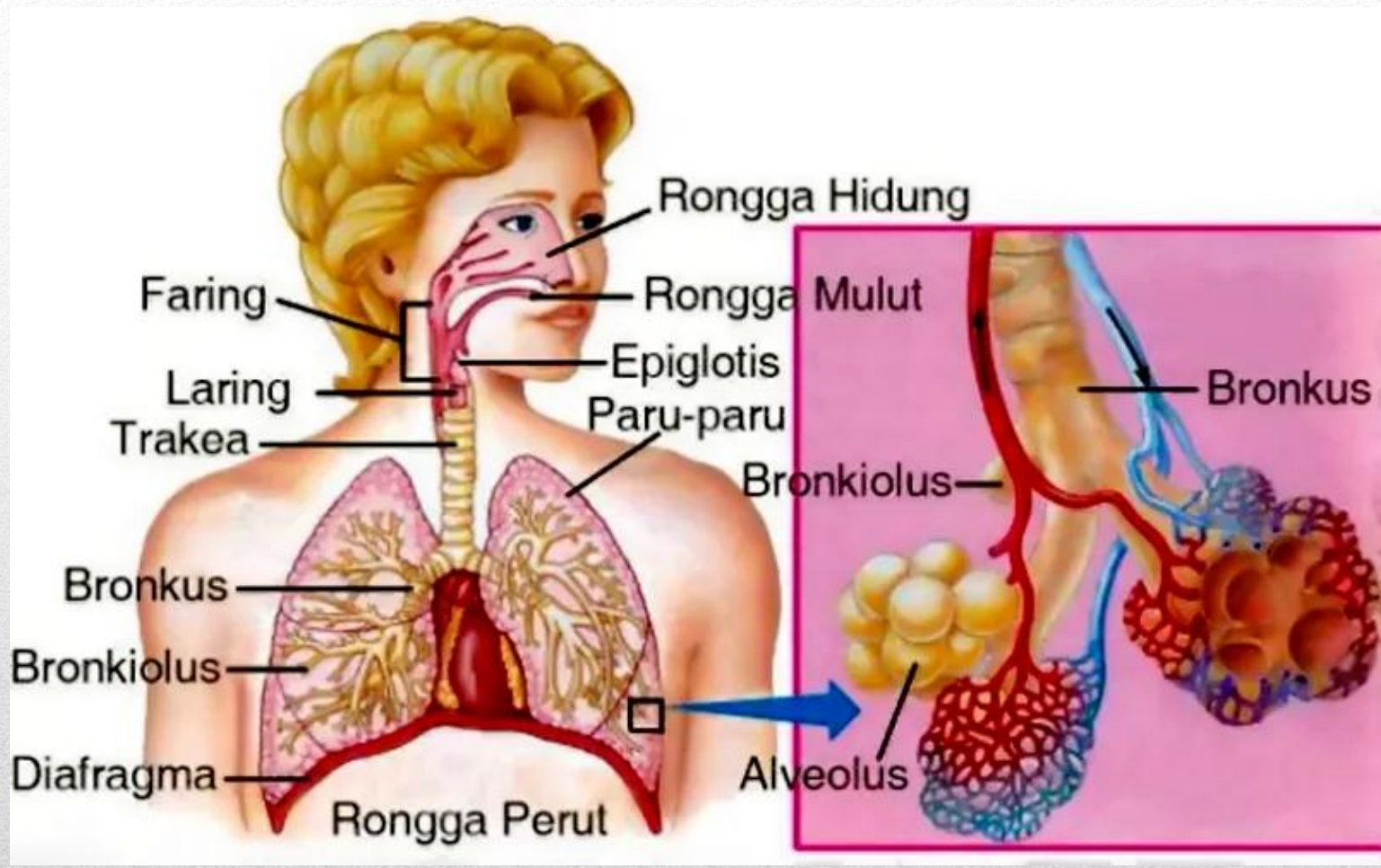
Breathing Assessment

Breathing Management

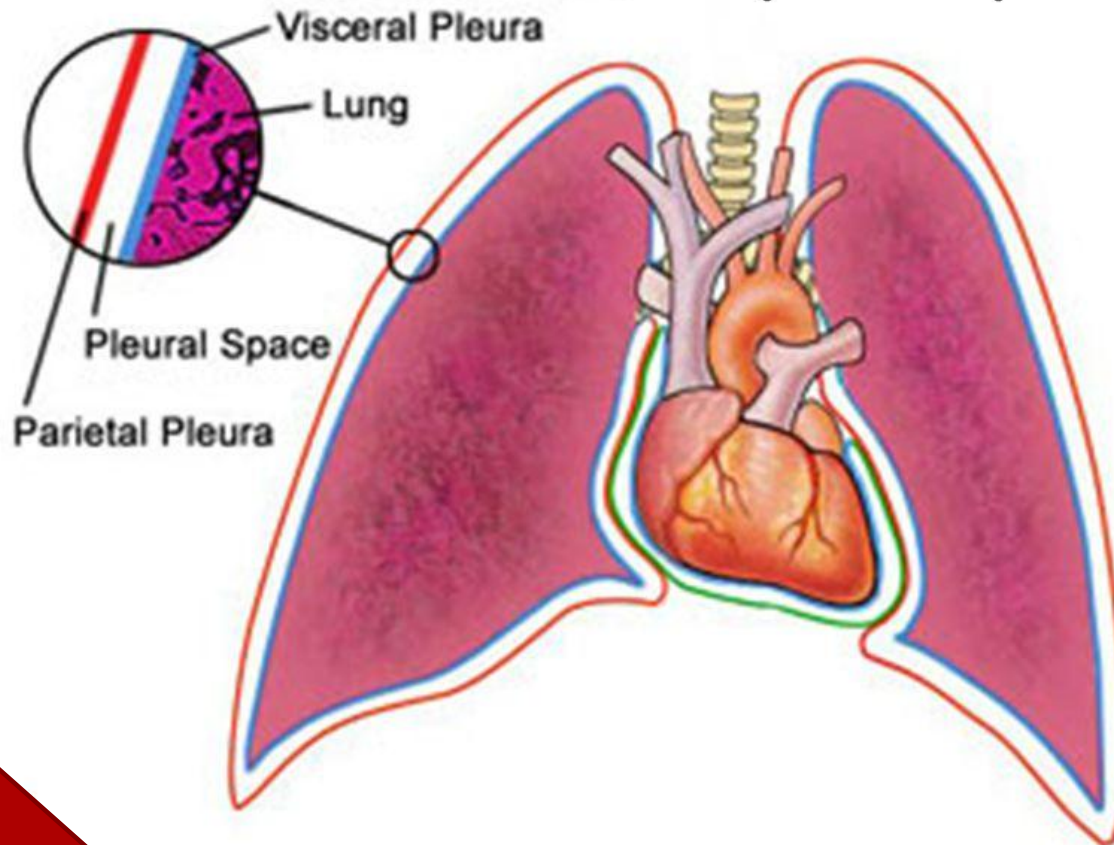
Ns. I Made Suindrayasa, S.Kep., M.Kep

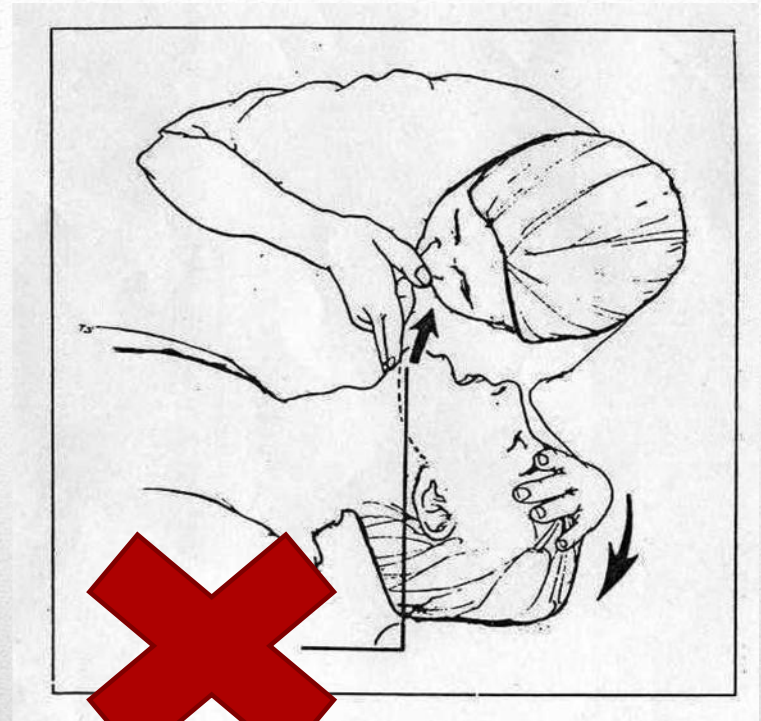
Tujuan Pembelajaran

- Review Anatomi Fisiologi Sistem Pernafasan
 - Pengkajian breathing
 - Management breathing
 - Monitoring breathing
-



Paru-paru - pleura

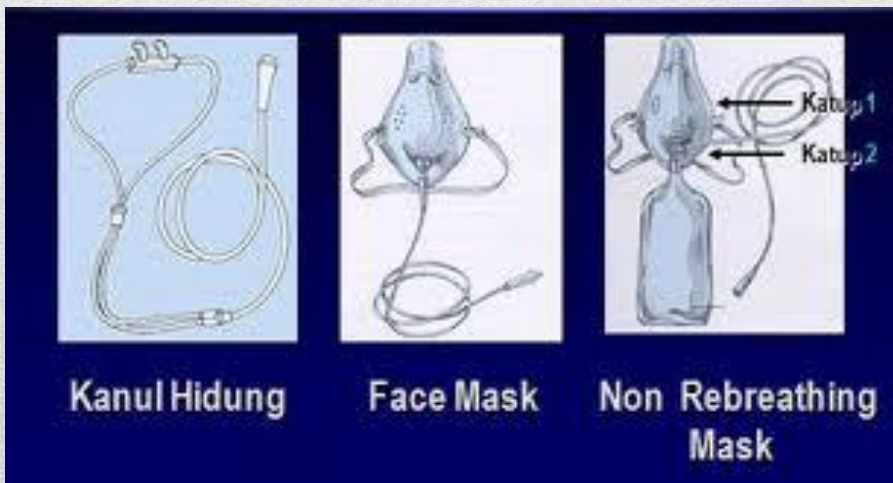
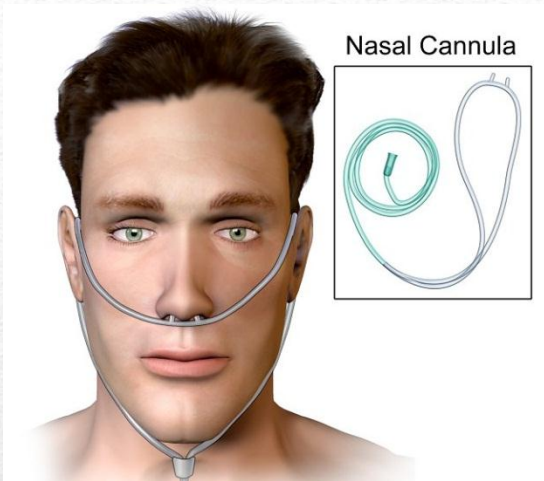




Inspeksi, Palpasi, Perkusi, Auskultasi



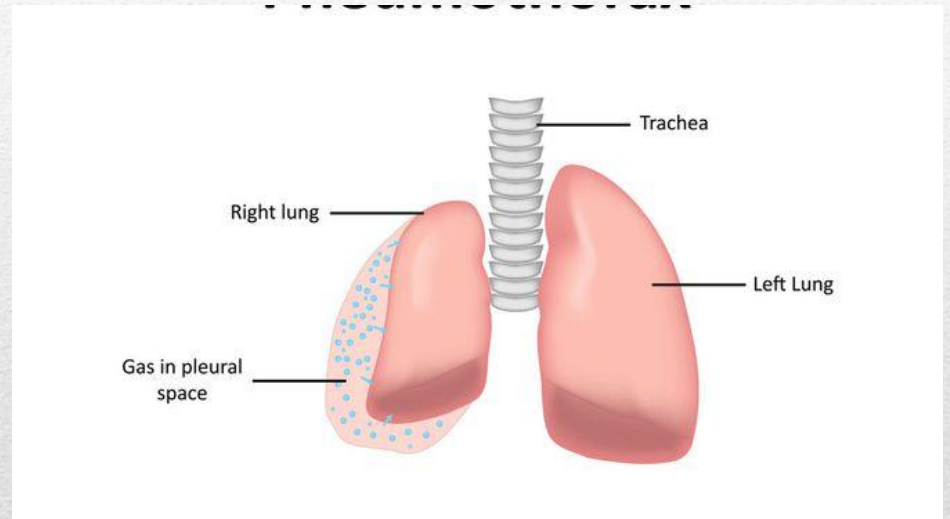
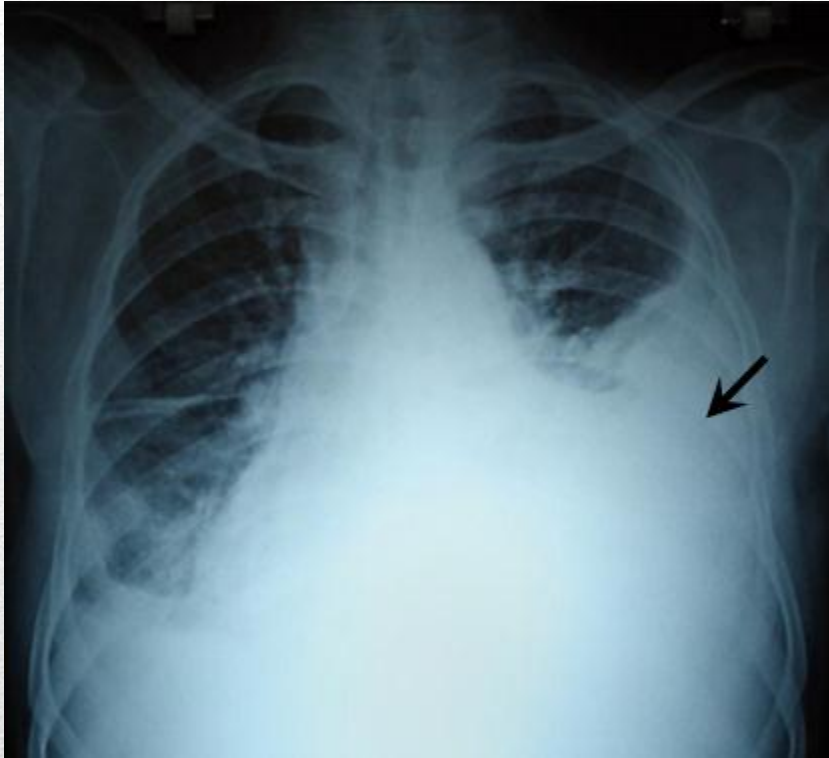
	Normal x/menit	Abnormal x/menit
Dewasa	12-20	< 8 dan > 24
Anak	15-30	< 15 dan > 35
Bayi	25-50	< 25 dan > 60



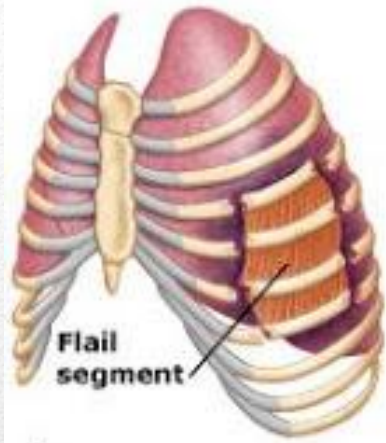
O ₂ Device	O ₂ Flow (L/min)	O ₂ %
1. Nasal pronge	1 – 6	24 – 50
2. Simple mask	5 - 10	40 - 60
3. Partial rebreathing mask	6 - 10	35 - 60
4. Non-rebreathing mask	8 - 12	80 - 95
5. Venturi mask	4 - 8	24, 26, 28, 30, 35, 40 & 50.

Review Airway

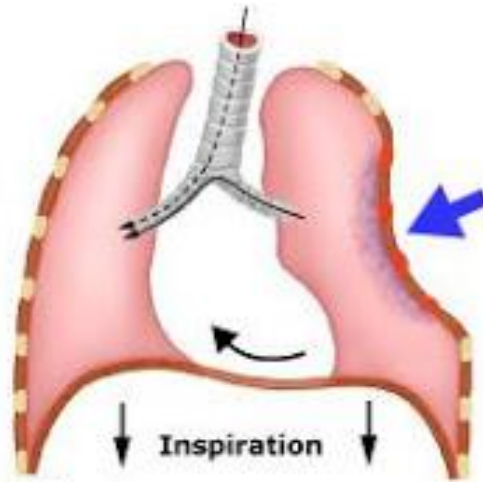
Gargling	Logroll Suction
Snoring	Head tilt + chin lift Jaw thrust OPA NPA
Crowing	Intubasi endotracheal (ETT) Needle cryco-thyroidotomy



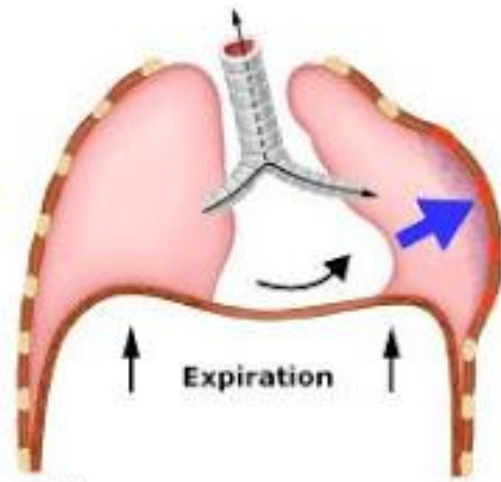
Hematotoraks & Pneumotoraks



A

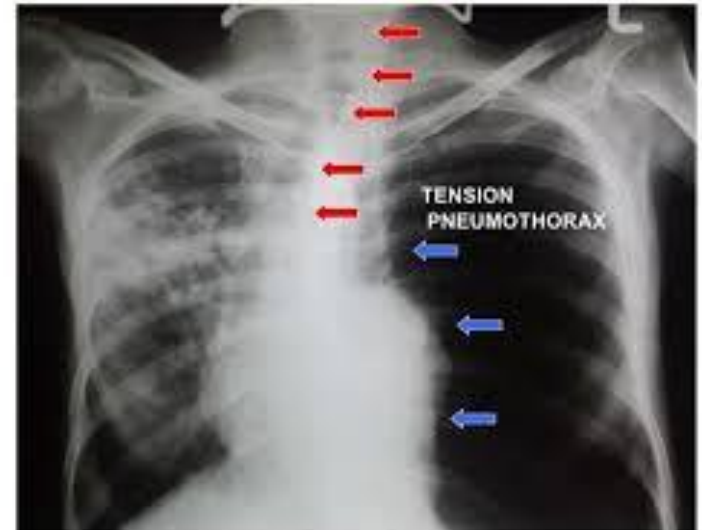
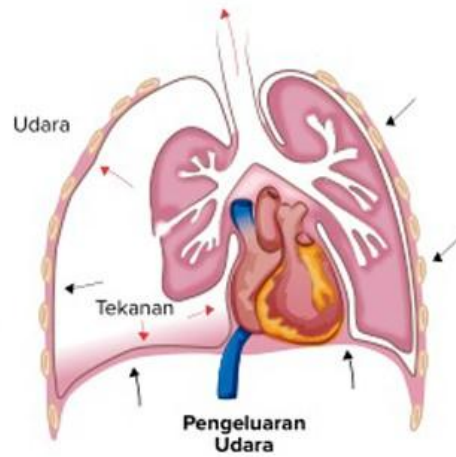
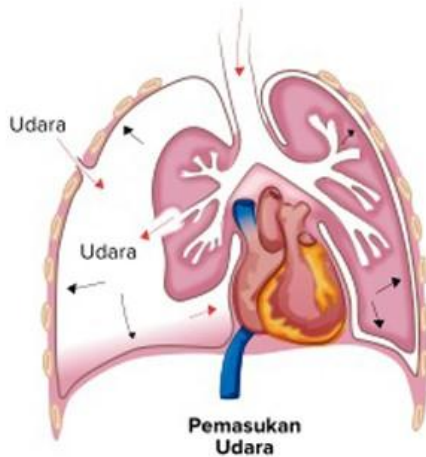


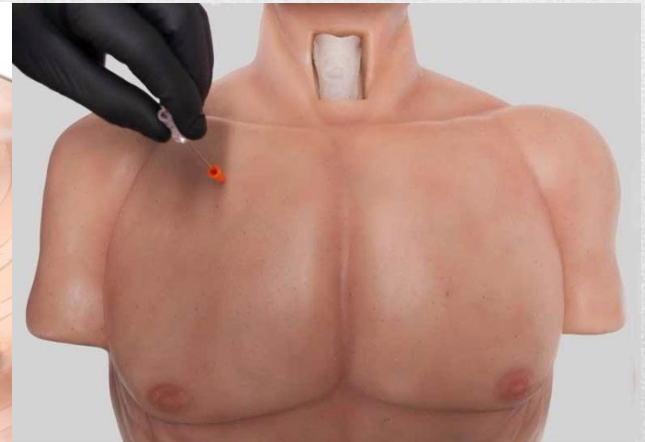
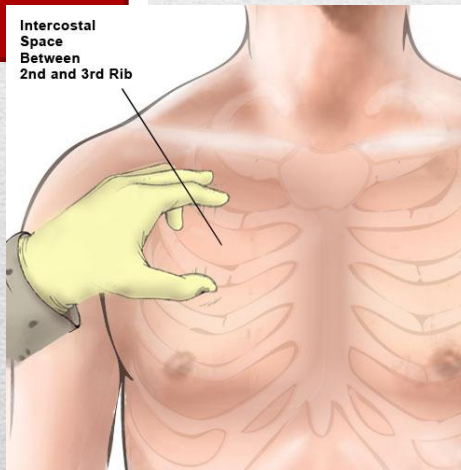
B



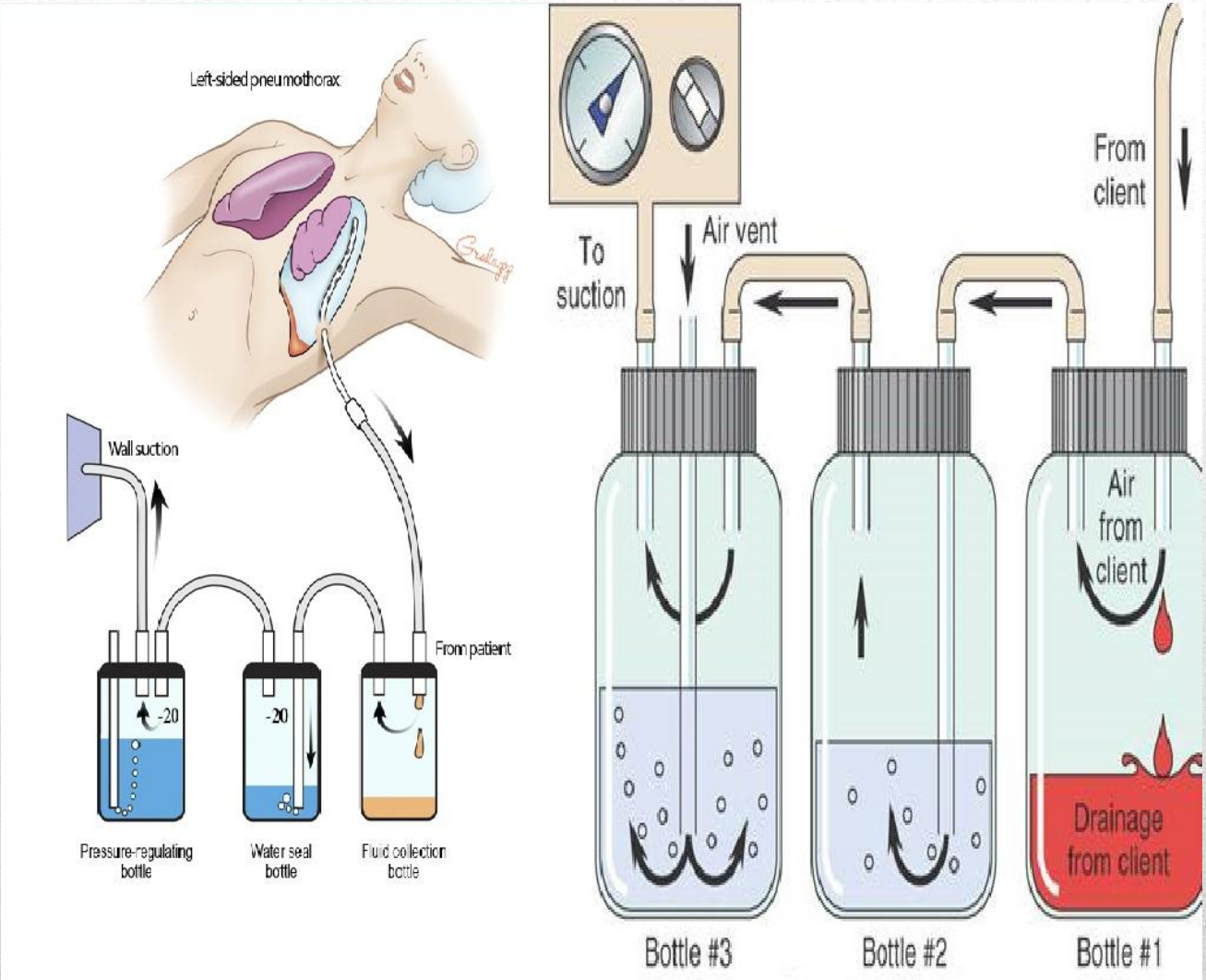
C

Tension Pneumothorax





Balutan 3 sisi & Thorakosintesis



Terima Kasih

