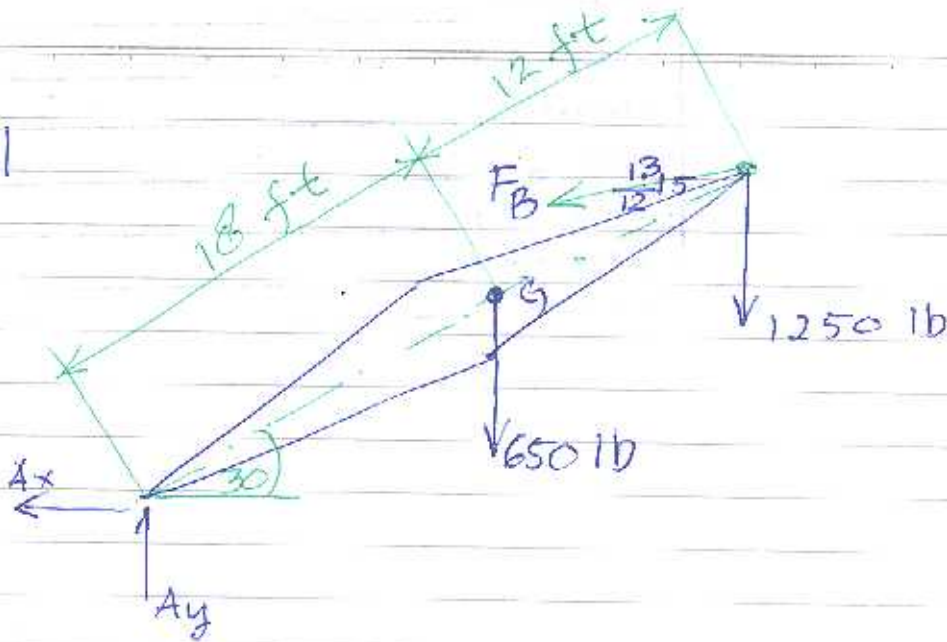


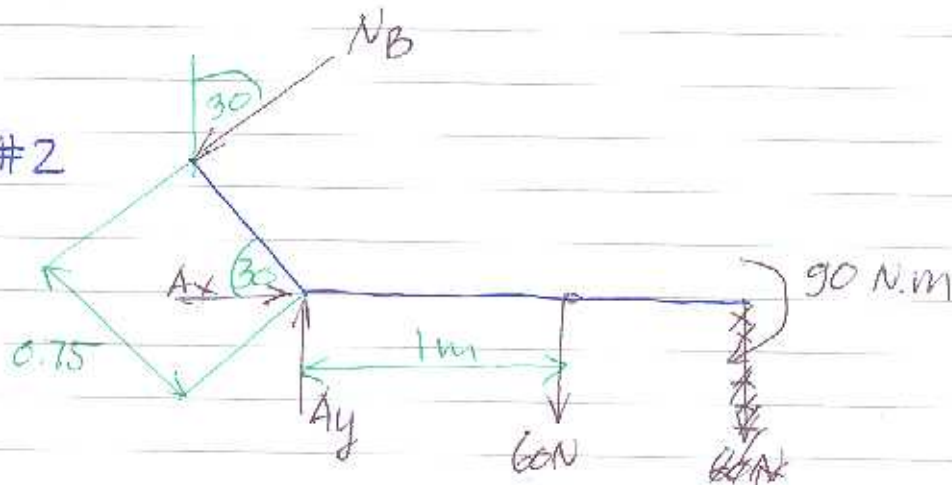
UCP 3 Selasa, 26 April 2016

#1



20%

#2



20%

$$\sum M_A = 0$$

$$-90 - 60(1) + N_B(0.75) = 0$$

$$N_B = 200 \text{ N} \quad \text{--- Ans.}$$

$$\sum F_x = 0$$

$$A_x - N_B \sin 30 = 0$$

$$A_x - 200 \sin 30 = 0$$

$$A_x = 100 \text{ N} \quad \text{--- Ans}$$

20%

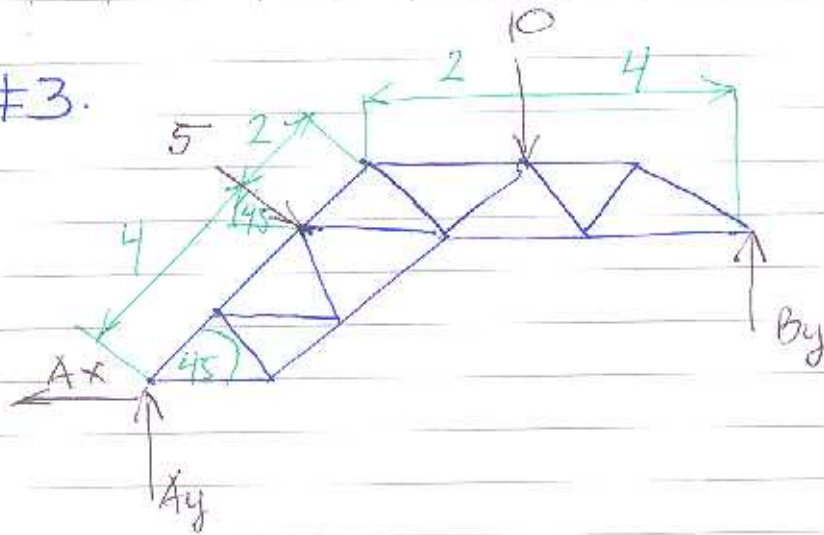
$$\sum F_y = 0$$

$$A_y - 60 - N_B \cos 30 = 0$$

$$A_y - 60 - 200 \cos 30 = 0$$

$$A_y = 233 \text{ N} \quad \text{--- Ans.}$$

#3.



20%

$$\rightarrow \sum F_x = 0$$

$$5 \cos 45 - A_x = 0$$

$$A_x = 3.54 \text{ KN} \text{ --- Ans.}$$

$$\uparrow \sum F_y = 0$$

$$A_y + B_y - 10 - 5 \sin 45 = 0$$

20%

$$\curvearrow \sum M_A = 0$$

$$B_y (6 + 6 \cos 45) - 10 (2 + 6 \cos 45) - 5 \sin 45 (4 \cos 45) - 5 \cos 45 (4 \sin 45) = 0$$

$$10.24 B_y - 62.43 - 10 - 10 = 0$$

$$B_y = 8.05 \text{ KN} \uparrow \text{ --- Ans}$$

$$A_y + 8.05 - 10 - 5 \sin 45 = 0$$

$$A_y = 5.49 \text{ KN} \uparrow \text{ --- Ans}$$