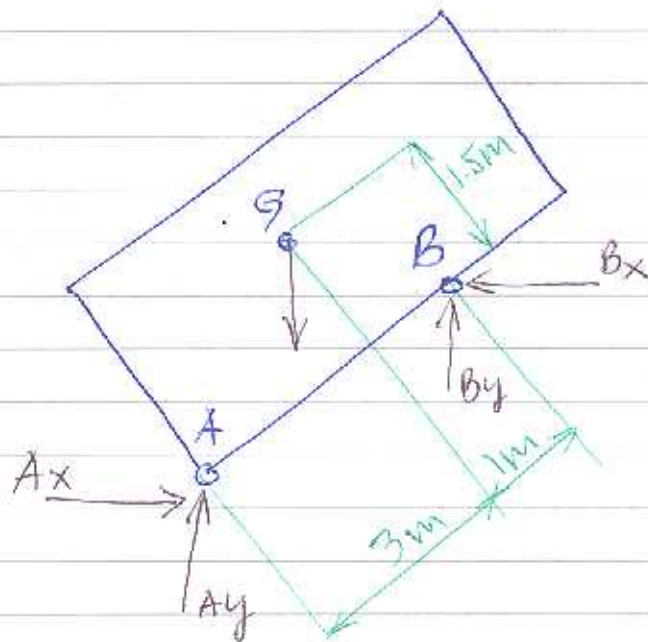


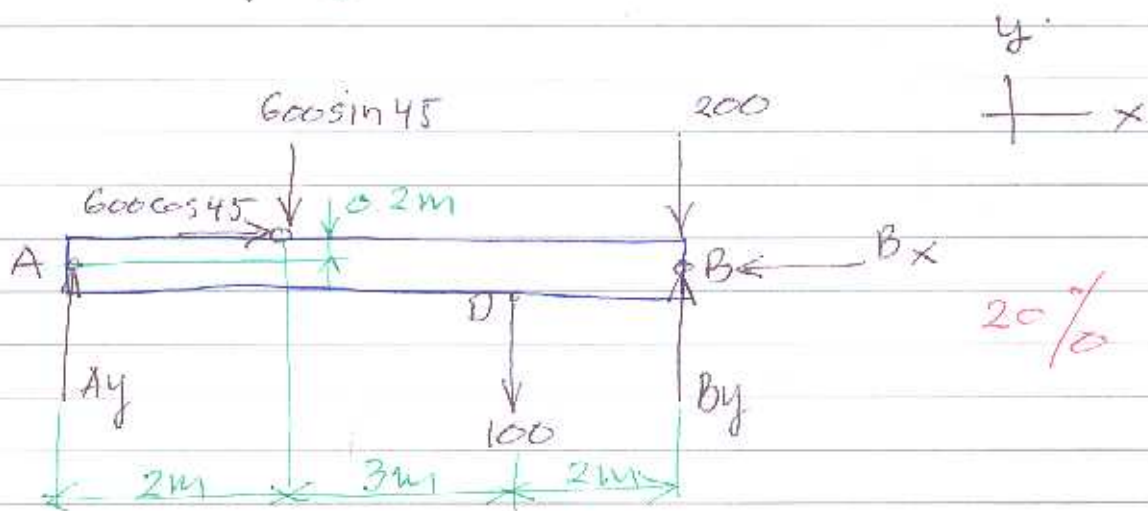
UCP 3, Kamis 28 April 2016

#1.



20%

#2.



20%

$$\rightarrow \sum F_x = 0$$

$$600 \cos 45 - B_x = 0$$

$$B_x = 424 \text{ N} \quad \text{--- Ans}$$

$$\curvearrow + \sum M_B = 0$$

$$100(2) + (600 \sin 45)(5) - Ay(7) = 0$$

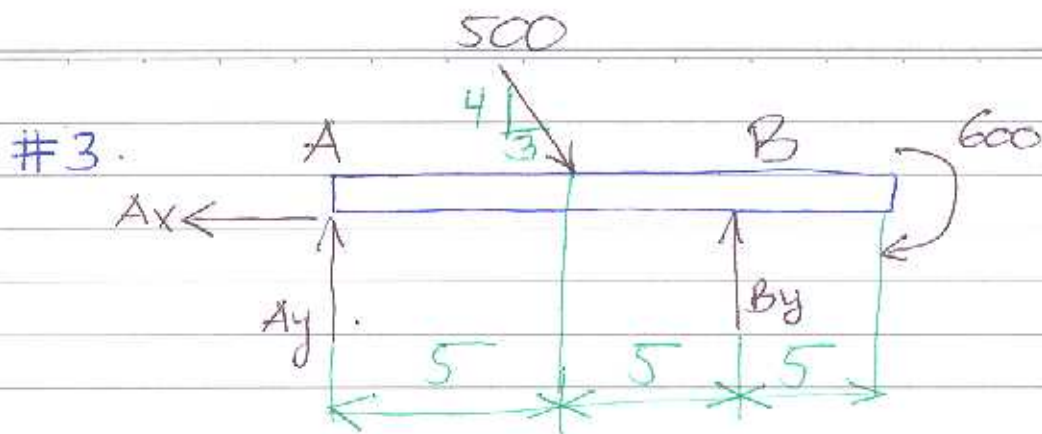
$$Ay = 319 \text{ N} \quad \text{--- Ans.}$$

20%

$$+\uparrow \sum F_y = 0$$

$$319 - 600 \sin 45 - 100 - 200 + B_y = 0$$

$$B_y = 405 \text{ N} \quad \text{--- Ans.}$$



20%

$$\rightarrow \sum F_x = 0$$

$$500\left(\frac{3}{5}\right) - A_x = 0$$

$$A_x = 300 \text{ lb} \quad \text{--- Ans}$$

$$+\uparrow \sum F_y = 0$$

$$A_y + B_y - 500\left(\frac{4}{5}\right) = 0$$

$$A_y + B_y = 400$$

$$\curvearrowleft \sum M_A = 0$$

$$B_y(10) - 500\left(\frac{4}{5}\right)(5) - 600 = 0$$

$$10B_y = 2000 + 600$$

$$B_y = 2600/10$$

$$B_y = 260 \quad \text{--- Ans.}$$

$$A_y + B_y = 400$$

$$A_y = 400 - 260 = 140 \quad \text{--- Ans.}$$

20%