

Chapter 2 - Introduction to the Visual Studio .NET IDE

Outline

- 2.1 Introduction**
- 2.2 Overview of the Visual Studio .NET IDE**
- 2.3 Menu Bar and Toolbar**
- 2.4 Visual Studio .NET IDE Windows**
 - 2.4.1 Solution Explorer**
 - 2.4.2 Toolbox**
 - 2.4.3 Properties Window**
- 2.5 Using Help**
- 2.6 Simple Program: Displaying Text and an Image**



2.1 Introduction

- Visual Studio .NET
 - Microsoft's Integrated Development Environment (IDE)
 - Used to create, run and debug programs (applications)
- Visual programming
 - Dragging and dropping predefined building blocks into place to create a simple Visual Basic program



2.2 Overview of the Visual Studio .NET IDE

- Start Page
 - Helpful links to get around
 - Get Started
 - What's New
 - Downloads
 - My Profile
 - Displays recent projects
 - Displays Open Project and New Project buttons



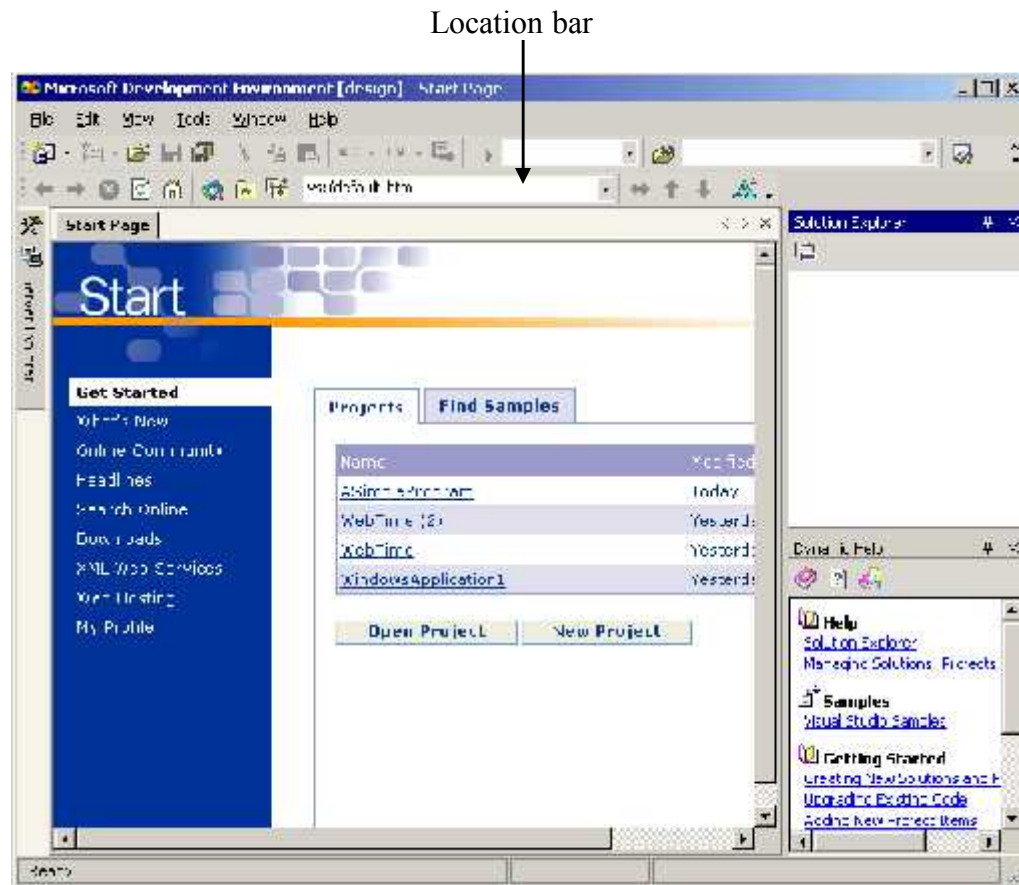


Fig. 2.1 Start Page in Visual Studio .NET.



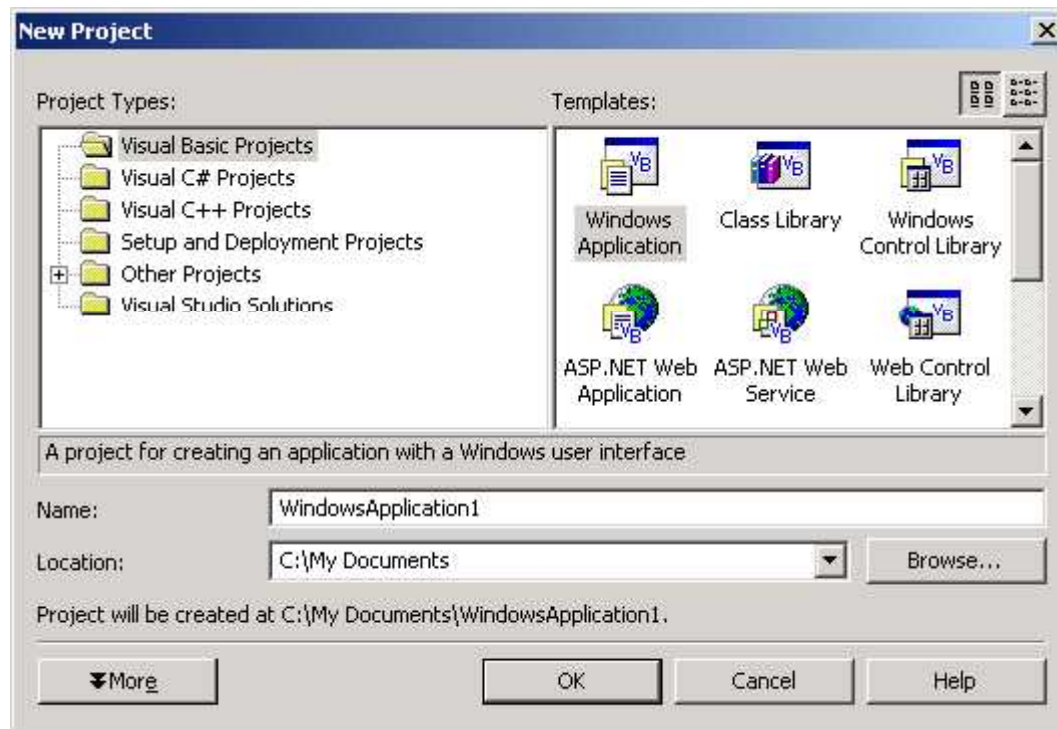


Fig. 2.2 New Project dialog.



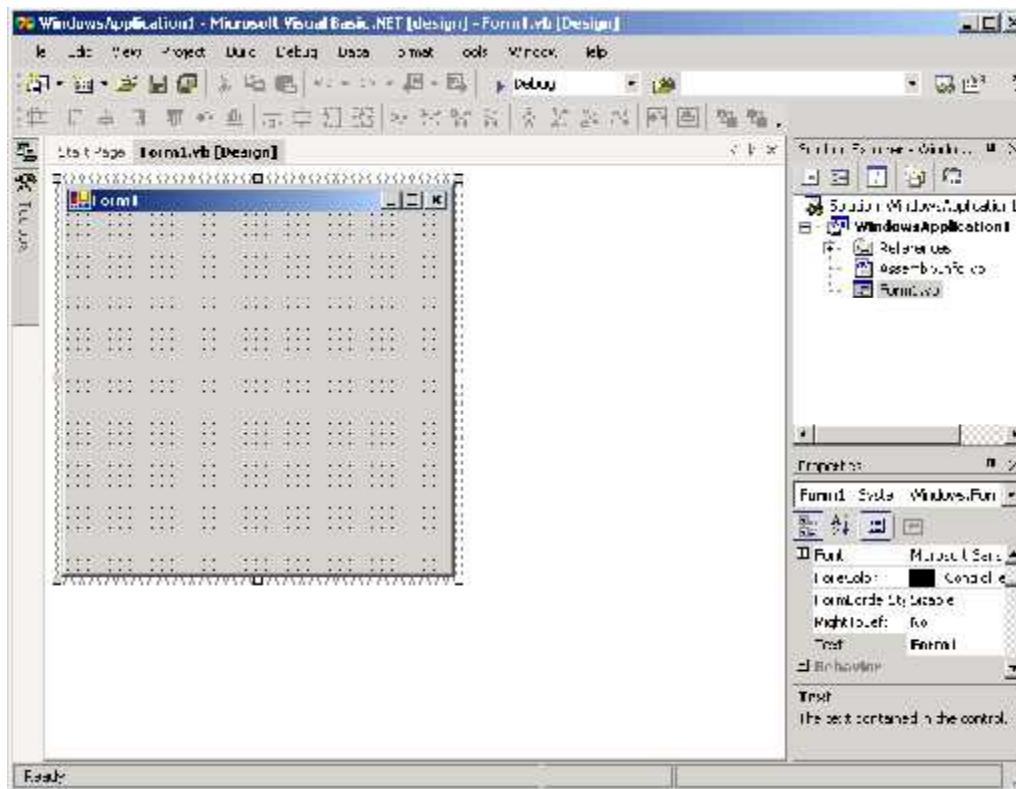


Fig. 2.3 Design view of Visual Studio .NET IDE.





Fig. 2.4 Visual Studio .NET IDE menu bar.



Menu	Description
File	Contains commands for opening projects, closing projects, printing project data, etc.
Edit	Contains commands such as cut, paste, find, undo, etc.
View	Contains commands for displaying IDE windows and toolbars.
Project	Contains commands for managing a project and its files.
Build	Contains commands for compiling a program.
Debug	Contains commands for <i>debugging</i> (i.e., identifying and correcting problems in a program) and running a program.
Data	Contains commands for interacting with <i>databases</i> (i.e., files that store data, which we discuss in Chapter 19, Databases, SQL and ADO .NET).
Format	Contains commands for arranging a form's controls.
Tools	Contains commands for accessing additional IDE tools and options that enable customization of the IDE.
Windows	Contains commands for arranging and displaying windows.
Help	Contains commands for accessing the IDE's help features.

Fig. 2.5 Summary of Visual Studio .NET IDE menus.

Fig. 2.5 Summary of Visual Studio .NET IDE menus.





Fig. 2.6 Toolbar demonstration.



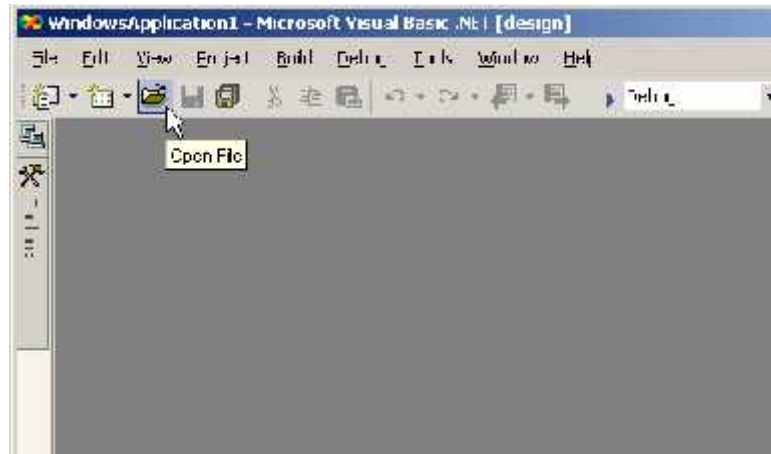


Fig. 2.7 Tool tip demonstration.



Fig. 2.8 Toolbar icons for three Visual Studio .NET IDE windows.



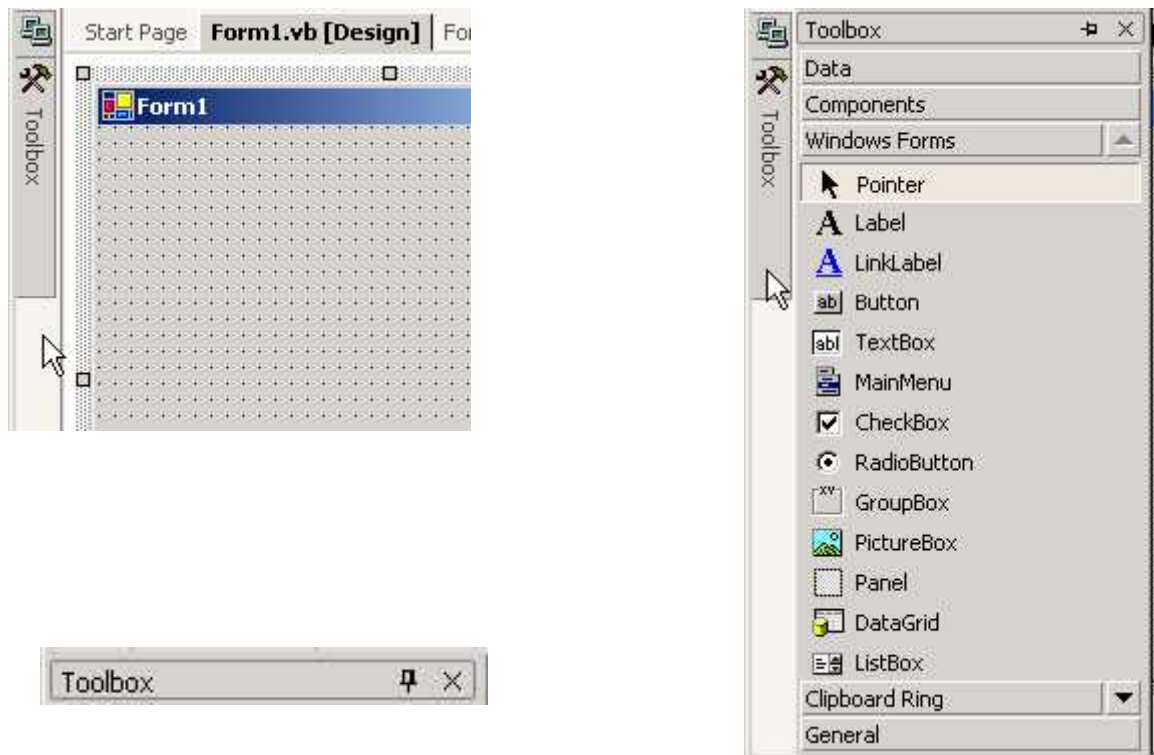


Fig. 2.9 Demonstrating the auto-hide feature.



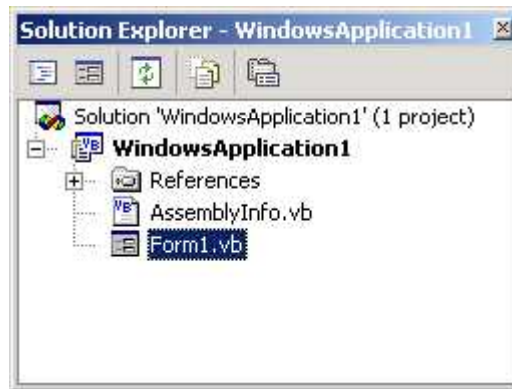


Fig. 2.10 Solution Explorer with an open solution.



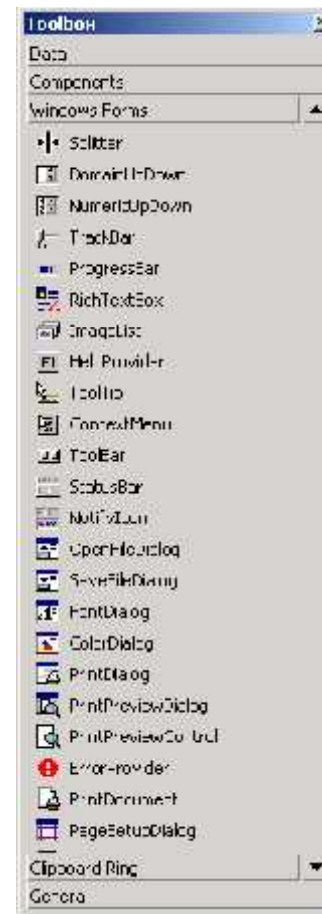


Fig. 2.11 Toolbox window.

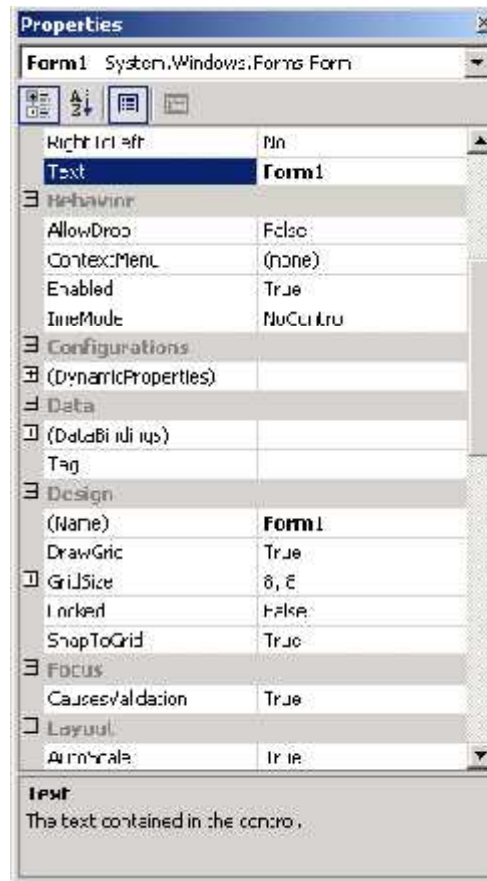


Fig. 2.12 Properties window.



Command	Description
Contents	Displays a categorized table of contents in which help articles are organized by topic.
Index	Displays an alphabetized list of topics through which the programmer can browse.
Search	Allows programmers to find help articles based on search keywords.

Fig. 2.13 Help menu commands.

Fig. 2.13 Help menu commands.



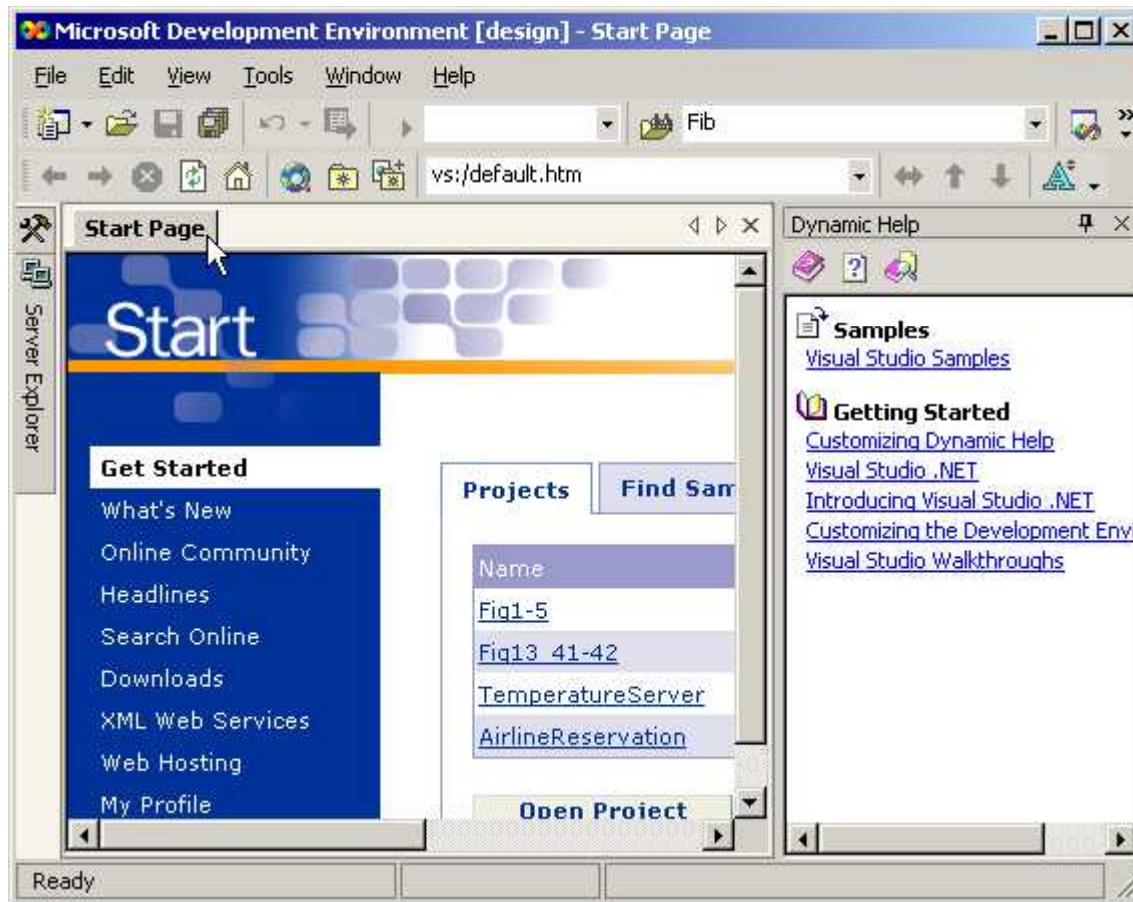


Fig. 2.14 Dynamic Help window.

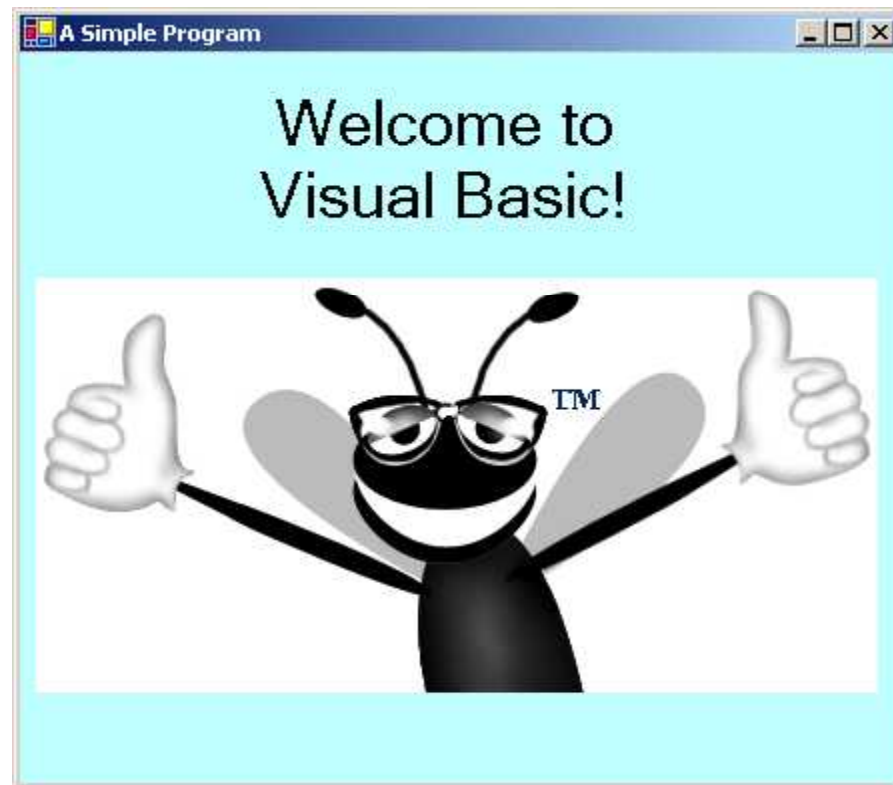


Fig. 2.15 Simple program executing.



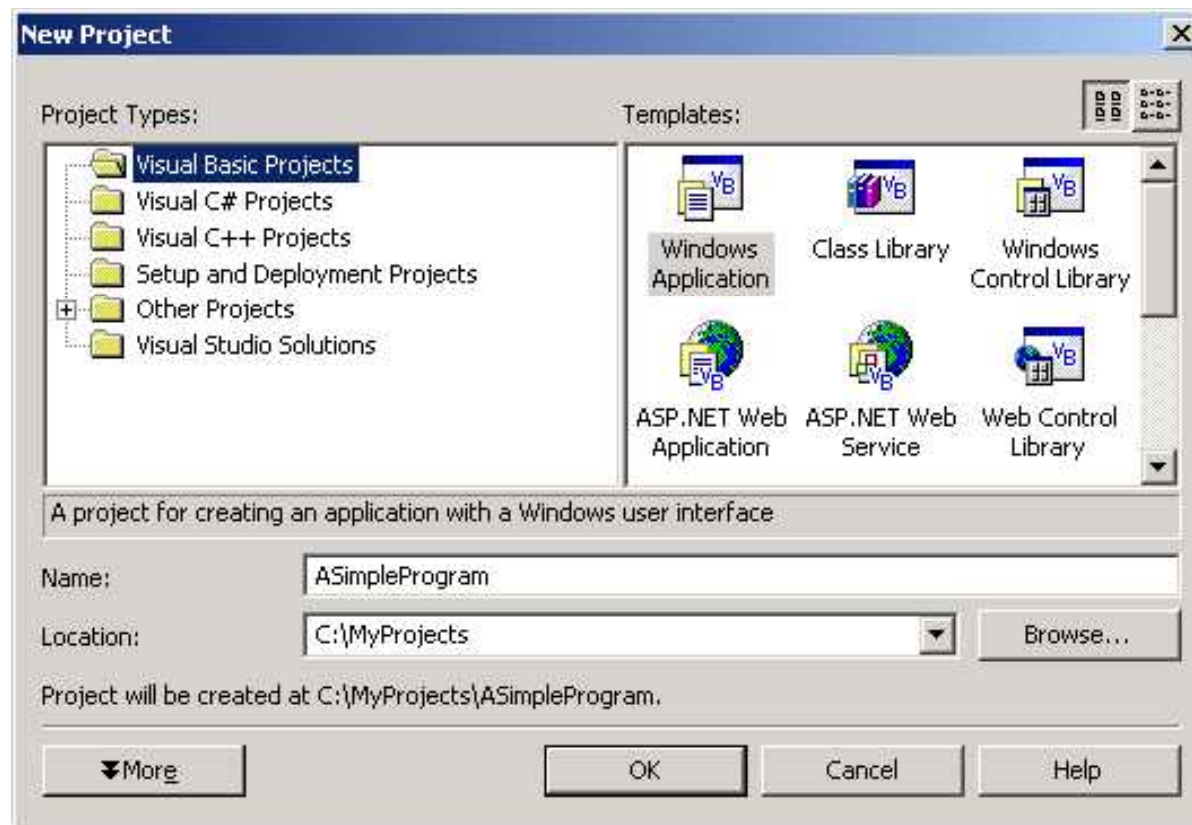


Fig. 2.16 Creating a new Windows Application.



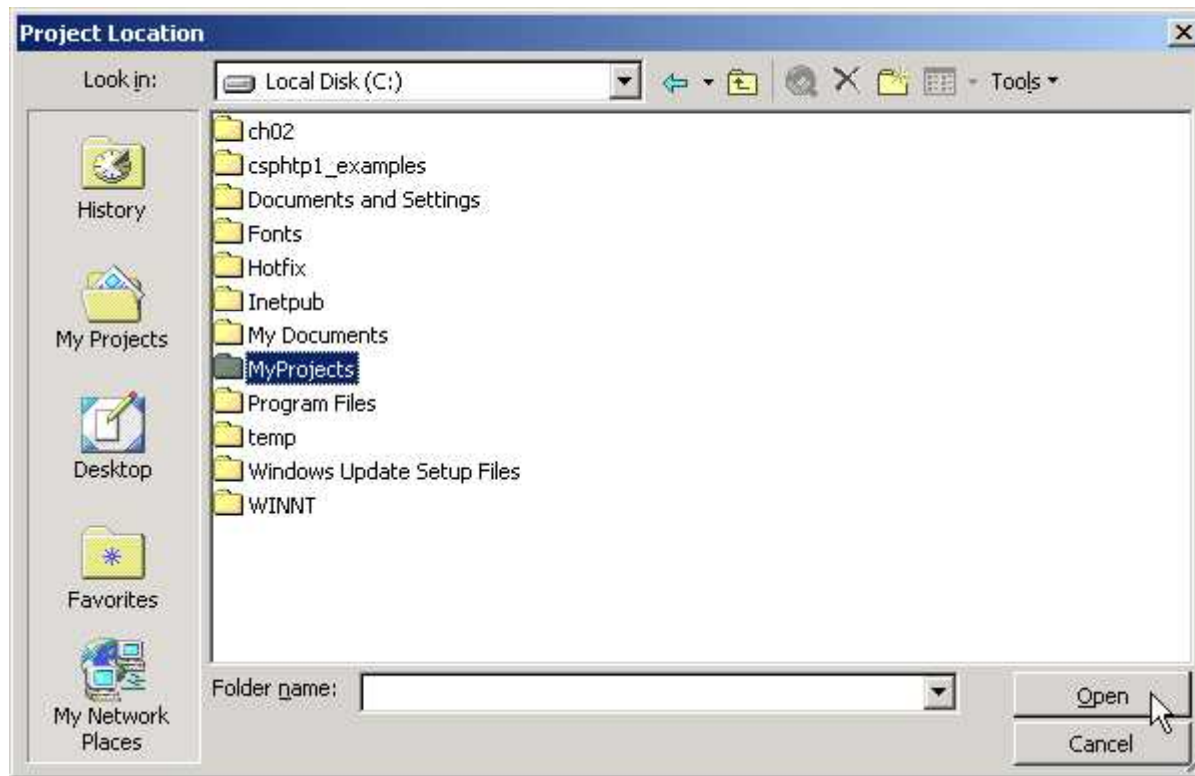


Fig. 2.17 Setting the project location in the Project Location dialog.



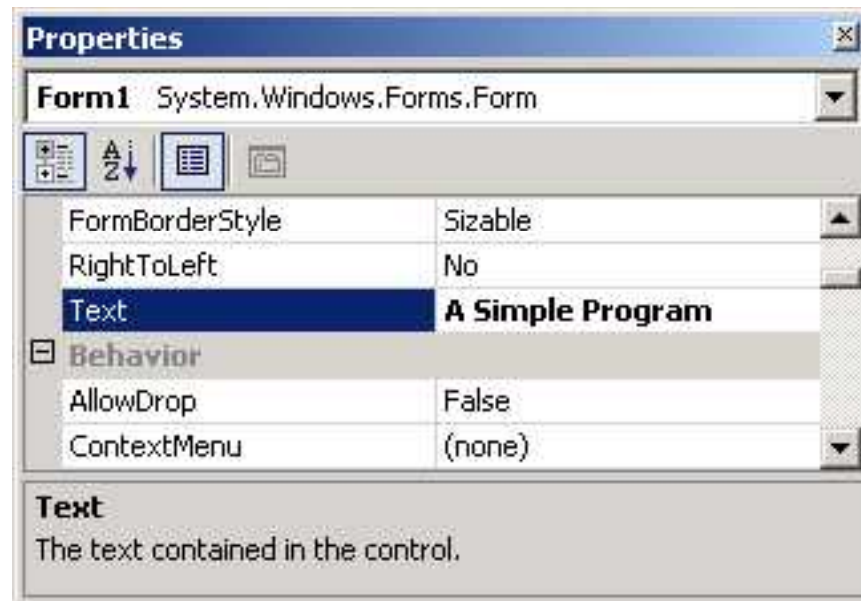


Fig. 2.18 Setting the form's Text property.



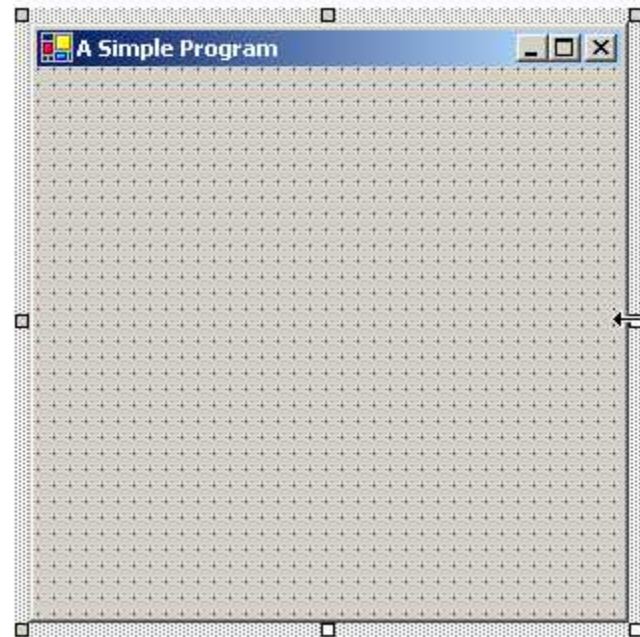


Fig. 2.19 Form with sizing handles.





Fig. 2.20 Changing the form's BackColor property.



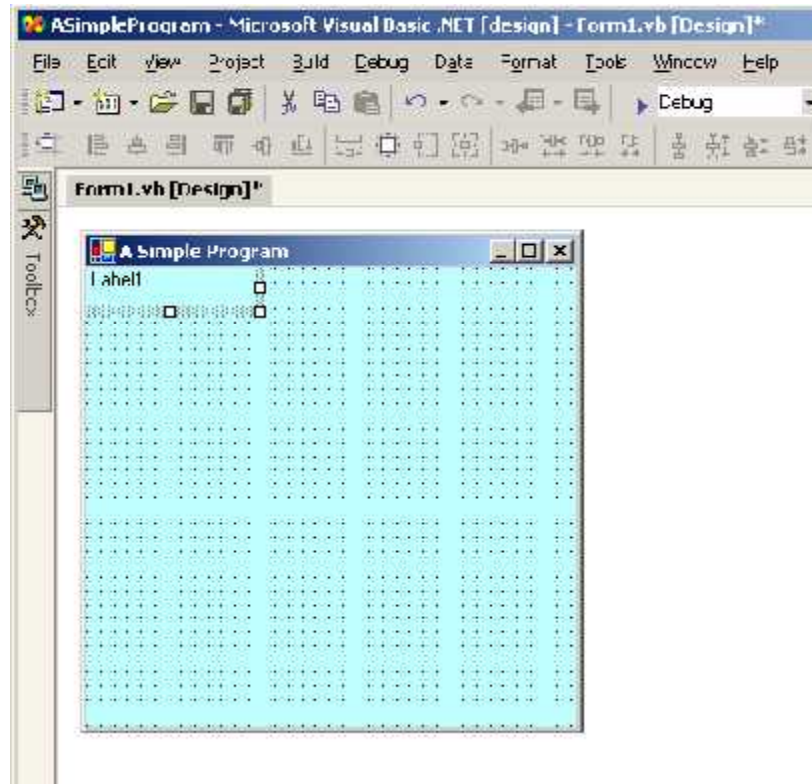


Fig. 2.21 Adding a label to the form.



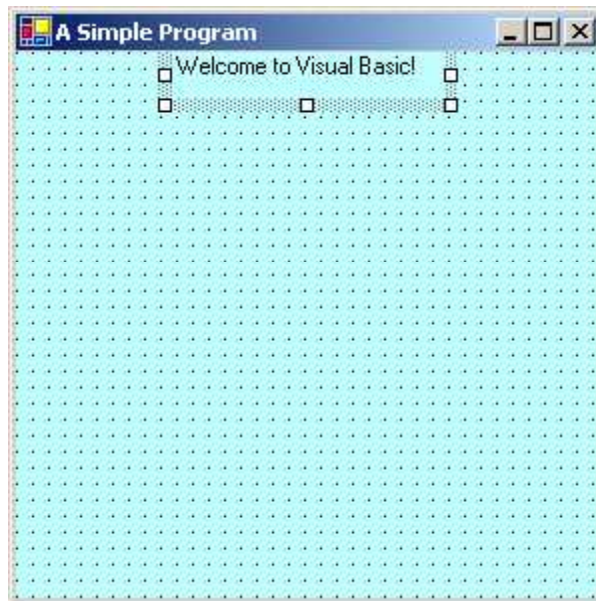


Fig. 2.22 Label in position with its Text property set.



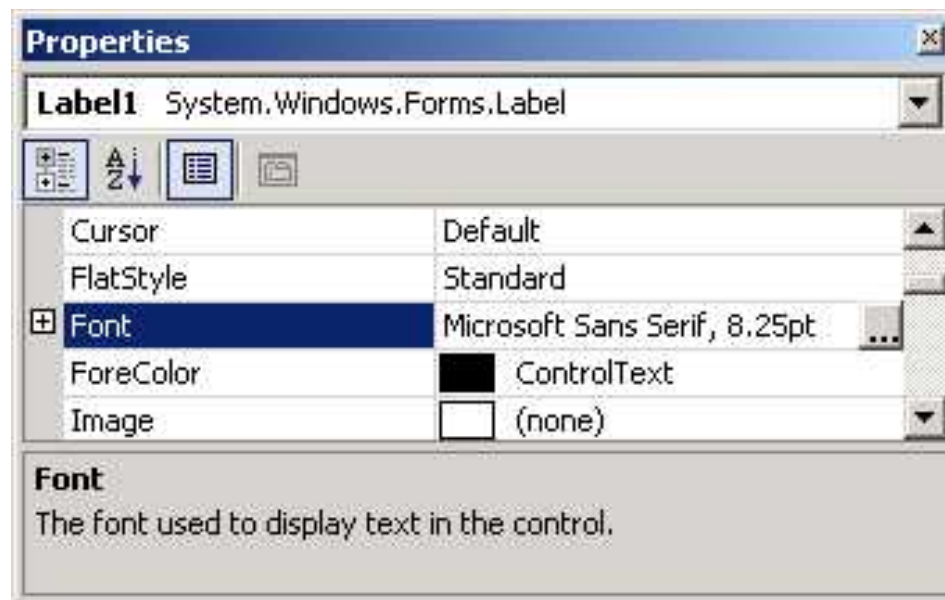


Fig. 2.23 Properties window displaying the label's properties.



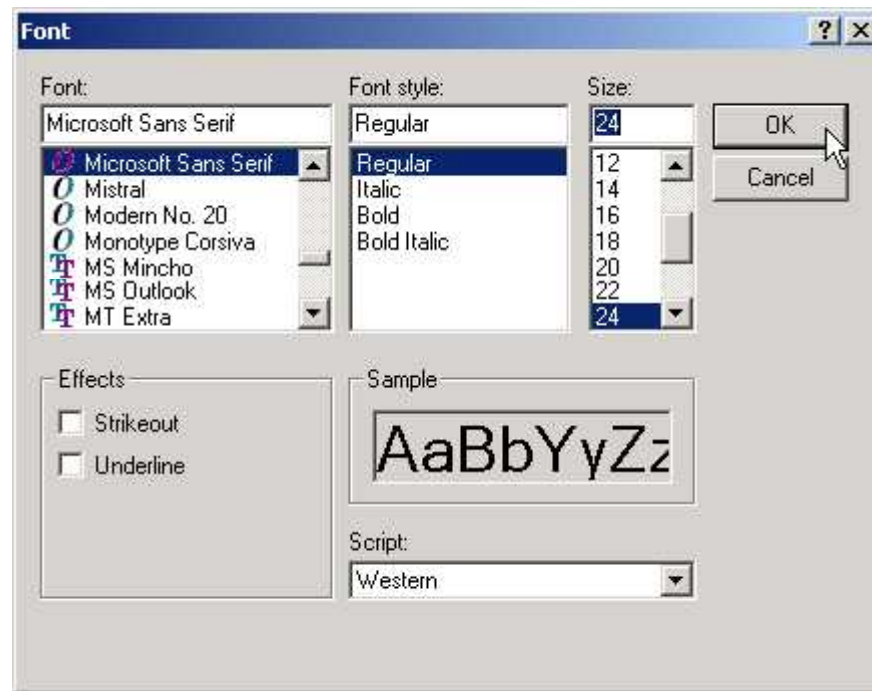


Fig. 2.24 Font window for selecting fonts, styles and sizes.



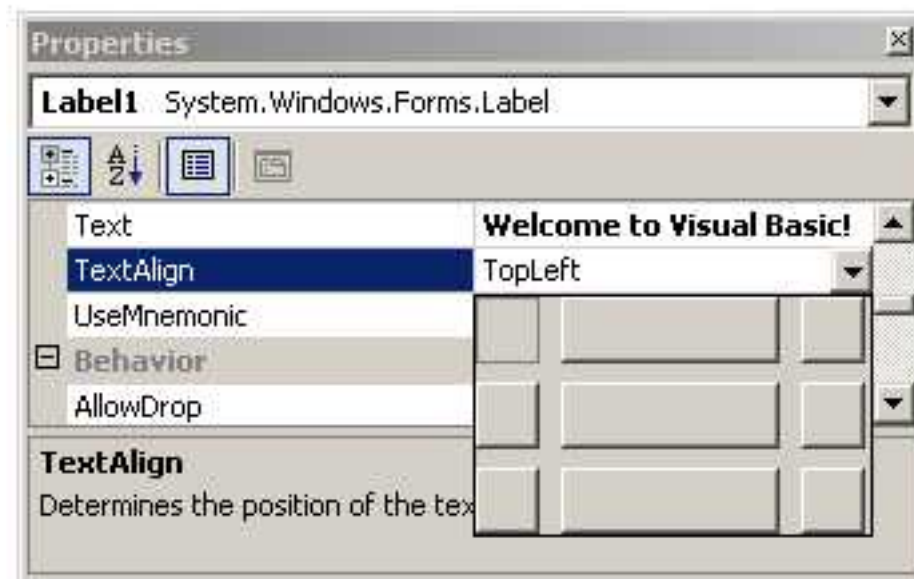


Fig. 2.25 Centering the label's text.



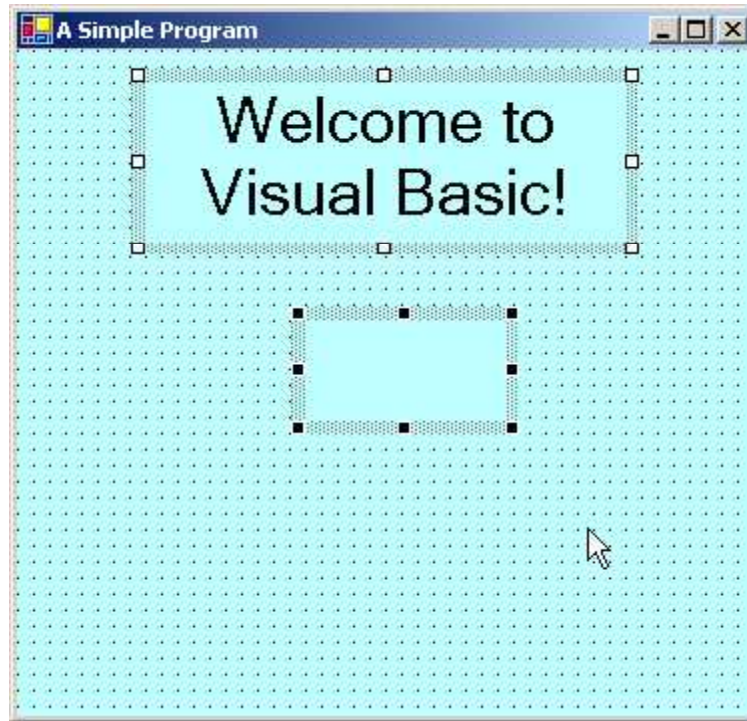


Fig. 2.26 Inserting and aligning the picture box.



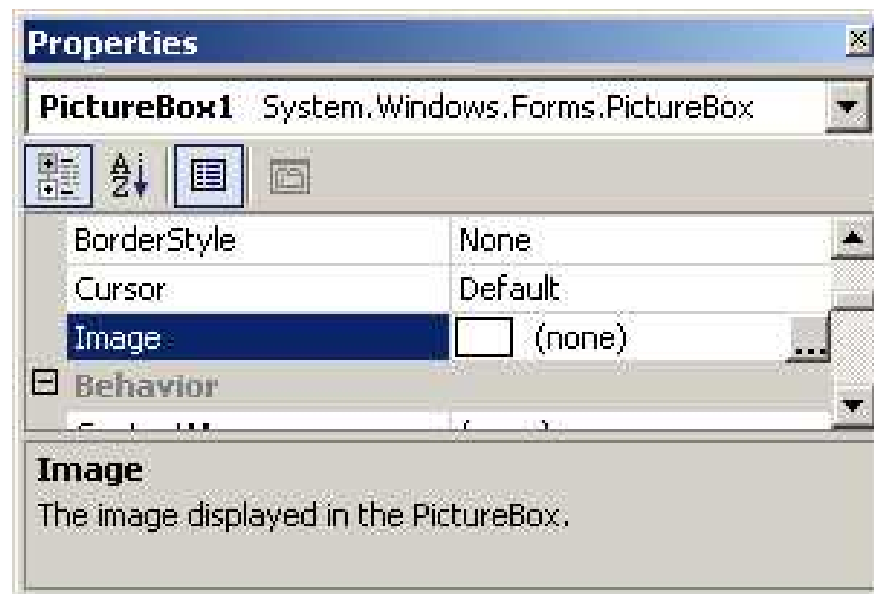


Fig. 2.27 Image property of the picture box.



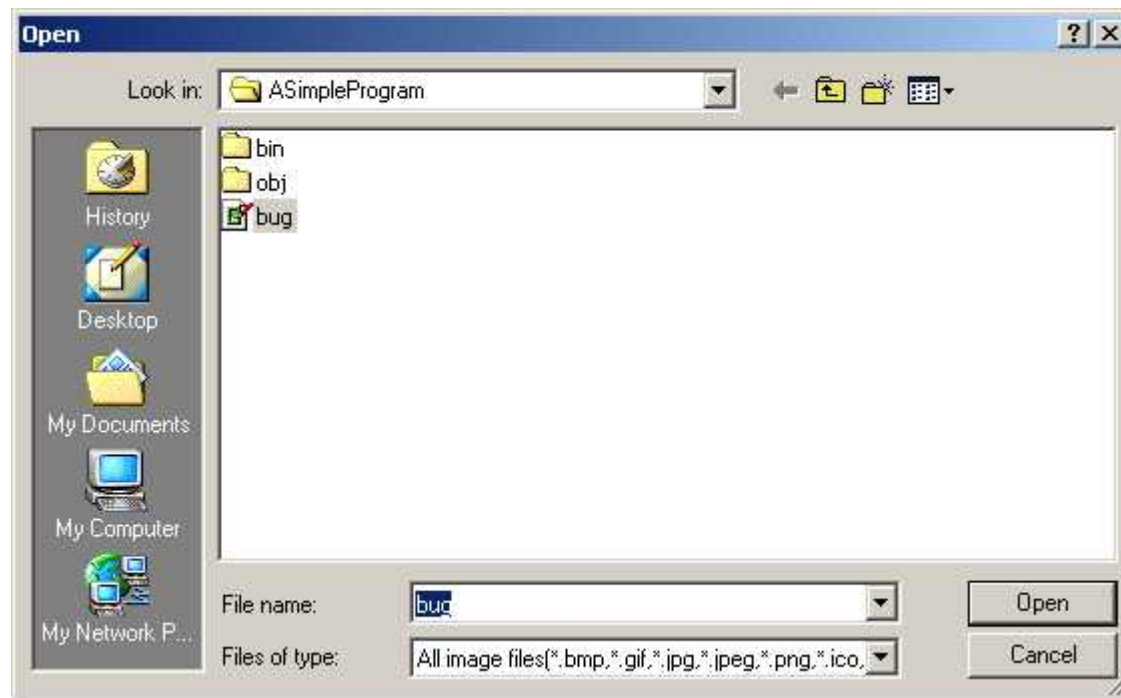


Fig. 2.28 Selecting an image for the picture box.



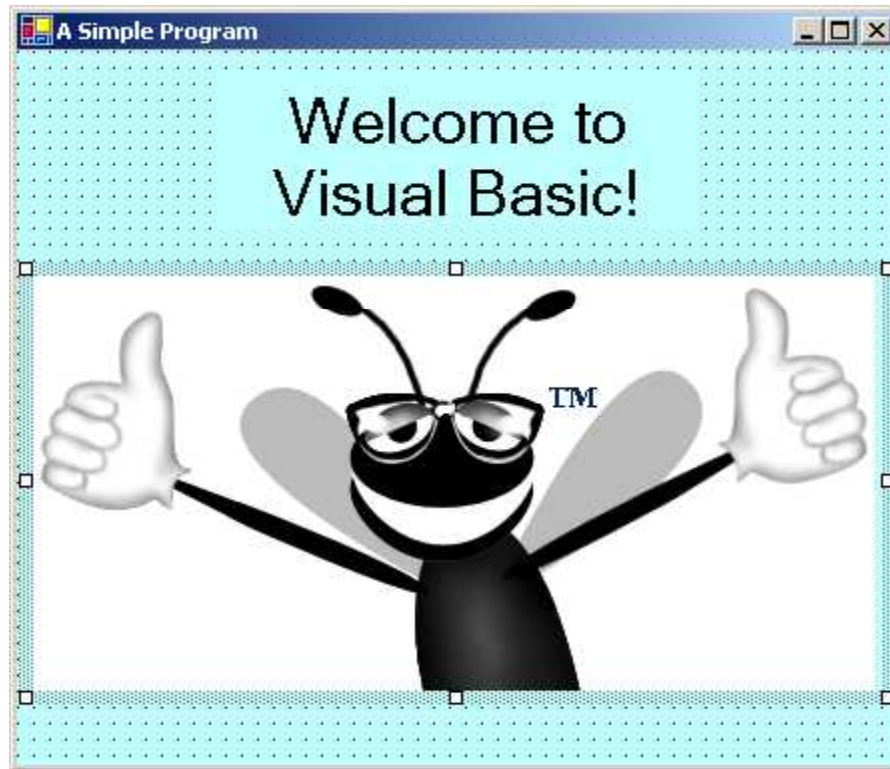


Fig. 2.29 Picture box displaying an image.



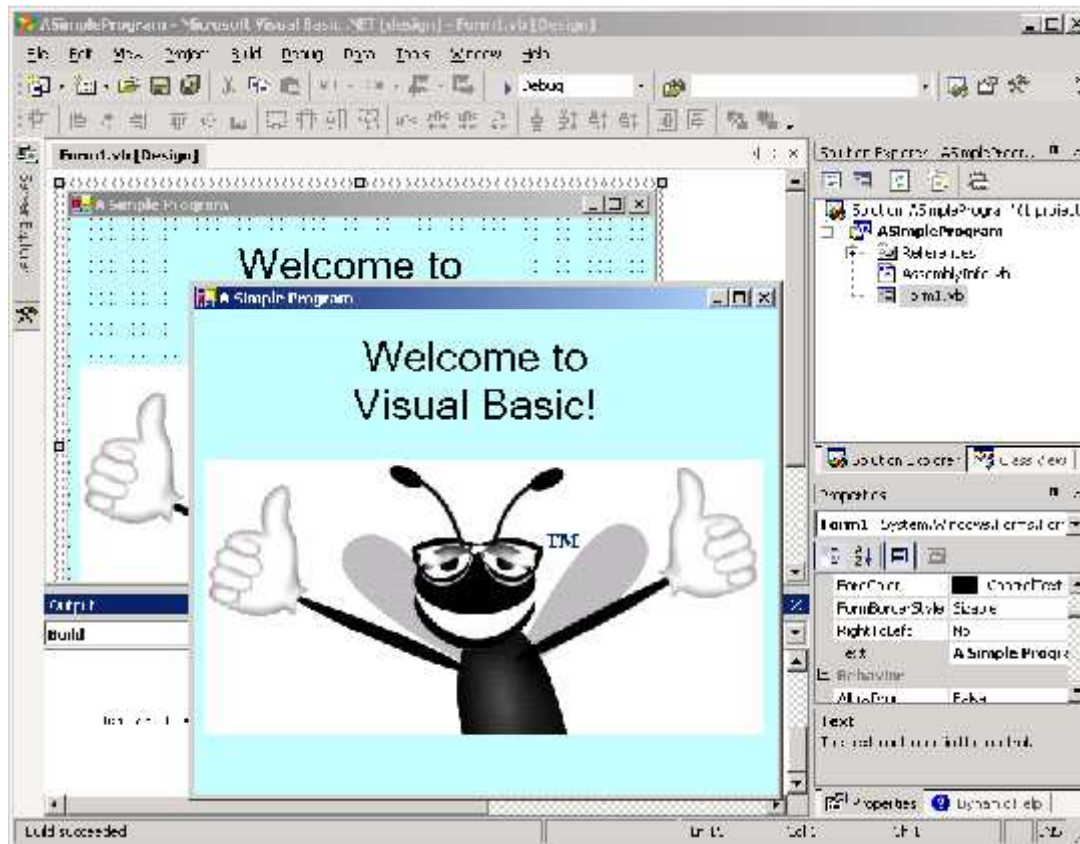


Fig. 2.30 IDE in run mode, with the running application in the foreground.

