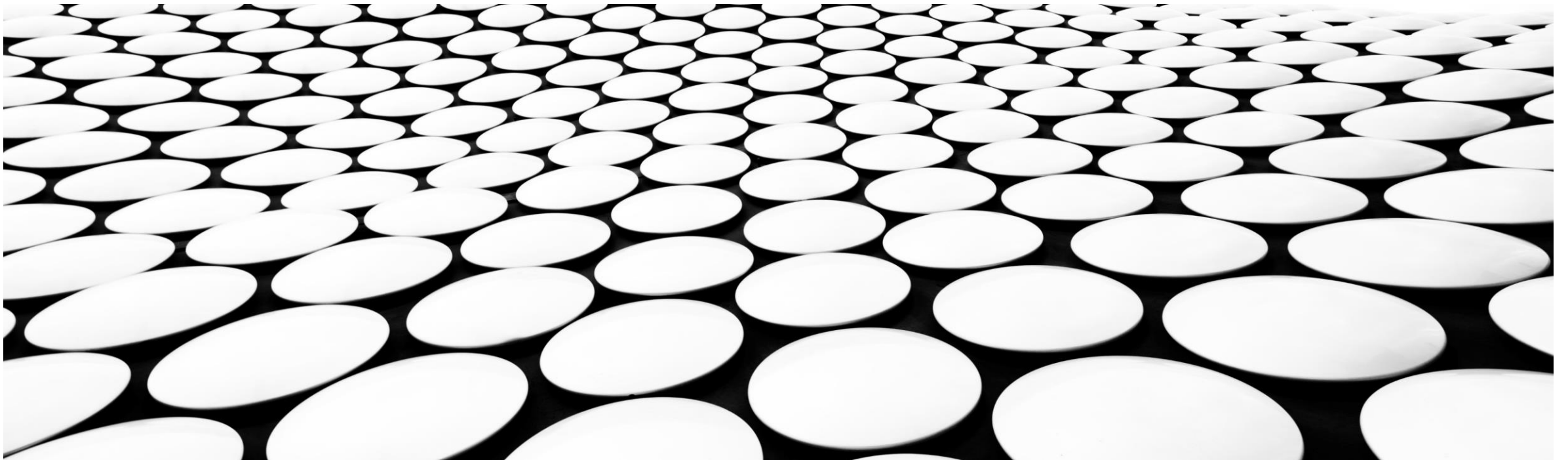
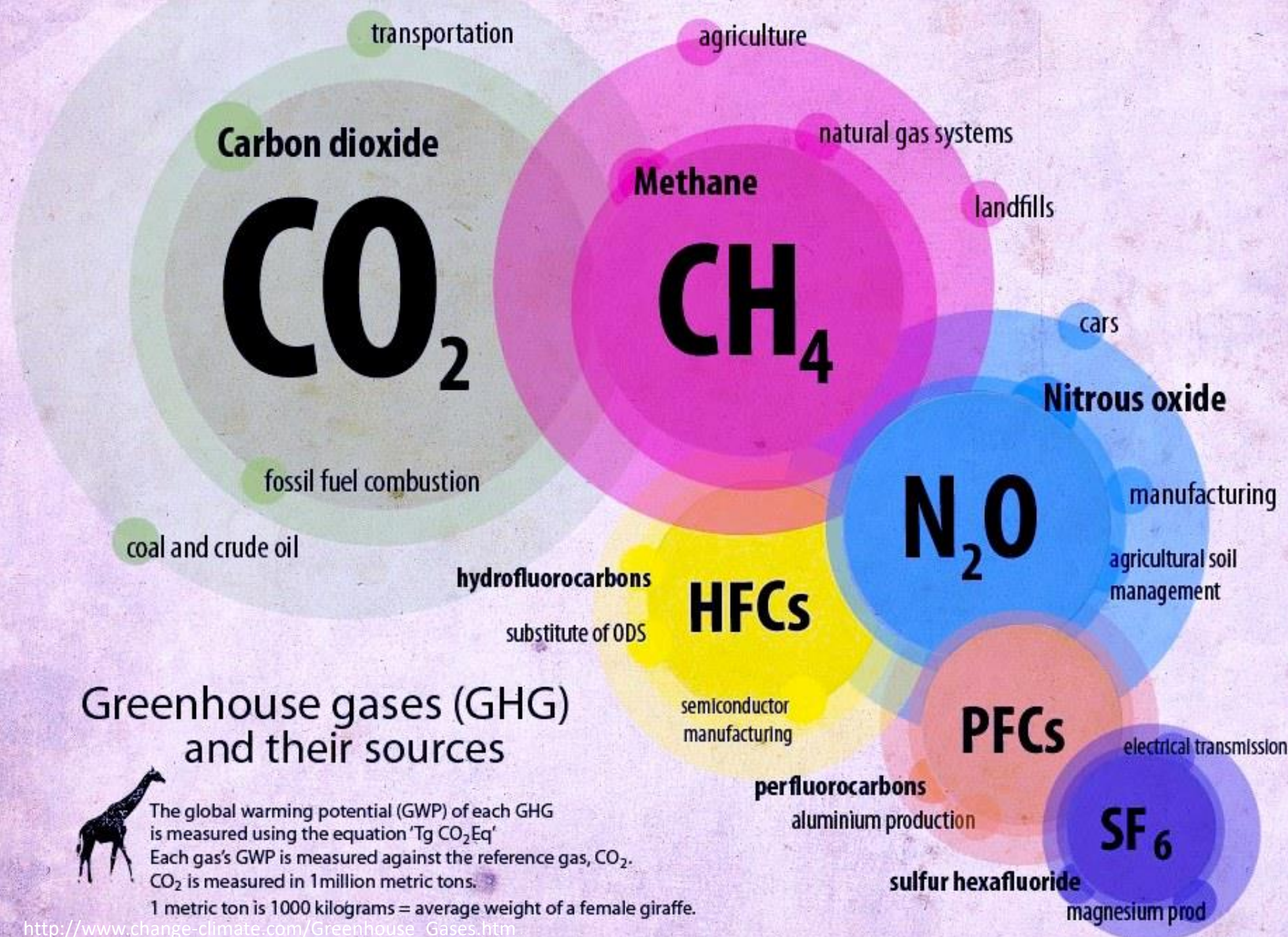


DAMPAK PENGGUNAAN ENERGI TERHADAP LINGKUNGAN

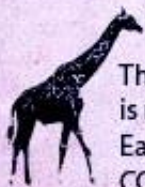


Sumber Gas Rumah Kaca

90% CO₂
9% CH₄
1% NO_x

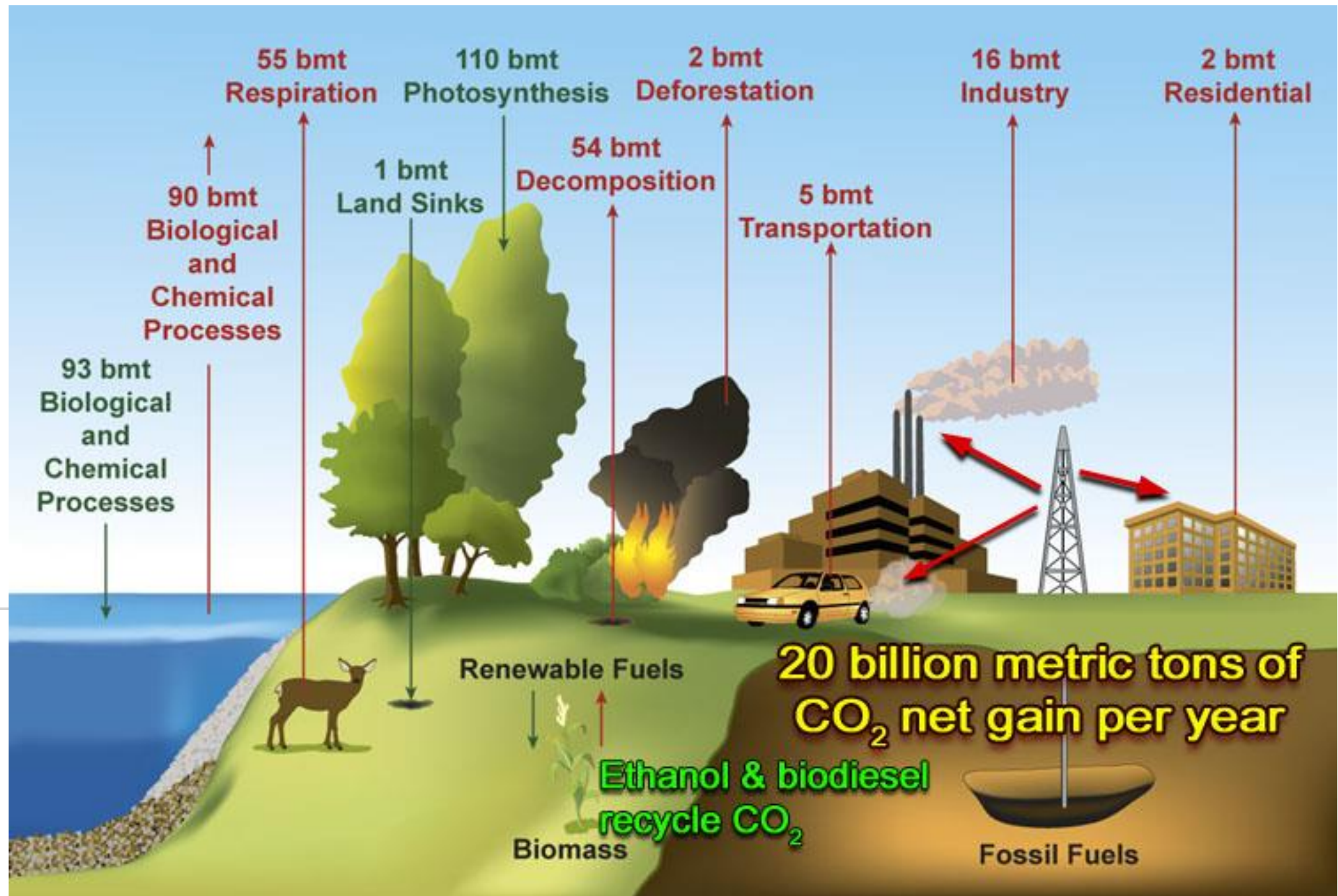


Greenhouse gases (GHG) and their sources

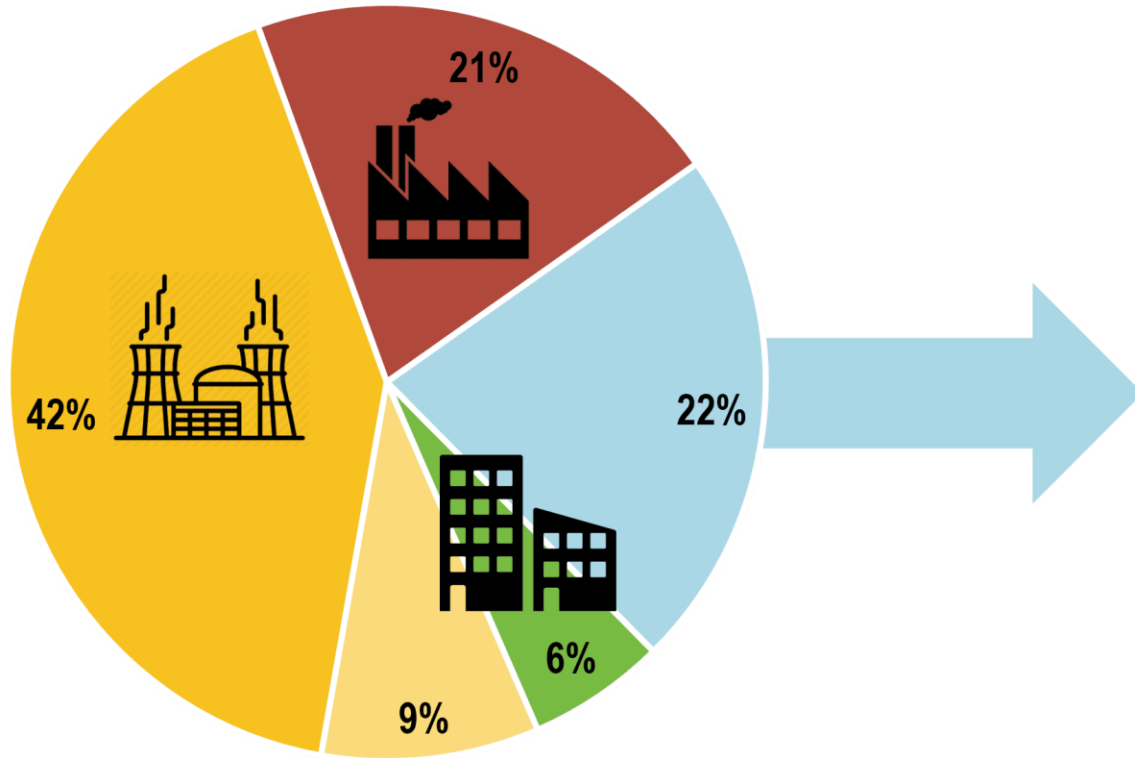


The global warming potential (GWP) of each GHG is measured using the equation 'Tg CO₂Eq'. Each gas's GWP is measured against the reference gas, CO₂. CO₂ is measured in 1 million metric tons. 1 metric ton is 1000 kilograms = average weight of a female giraffe.

Emisi CO2
20 milyar
ton per
tahun

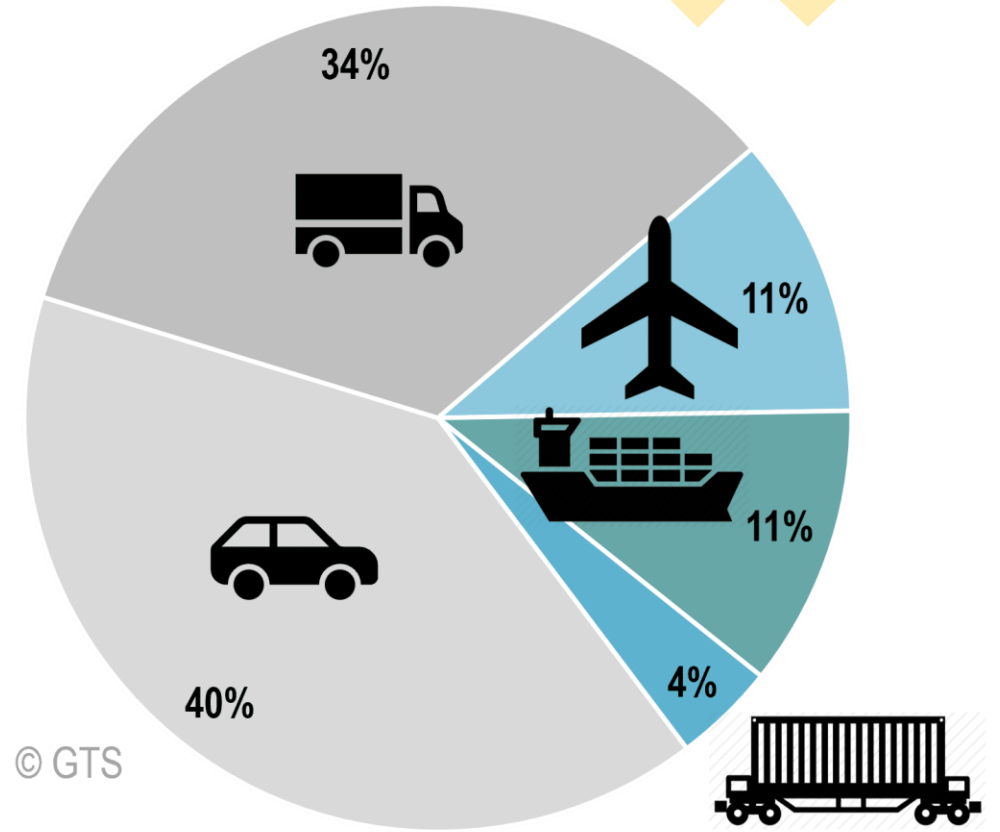


CO2 Emissions by Economic Sector



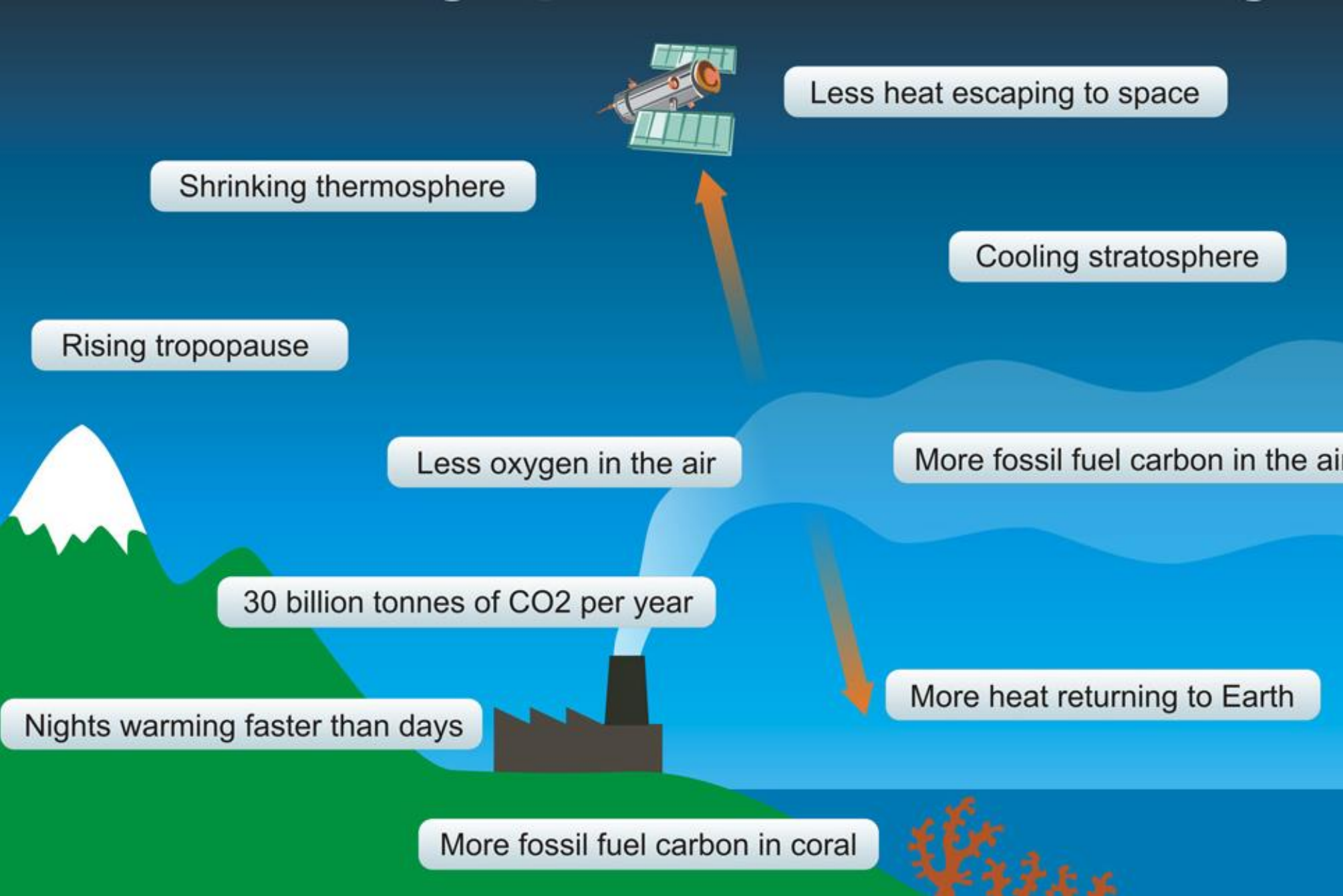
- Electricity and heat production
- Transport
- Other
- Manufacturing and construction
- Residential

CO2 Emissions by the Transport Sector

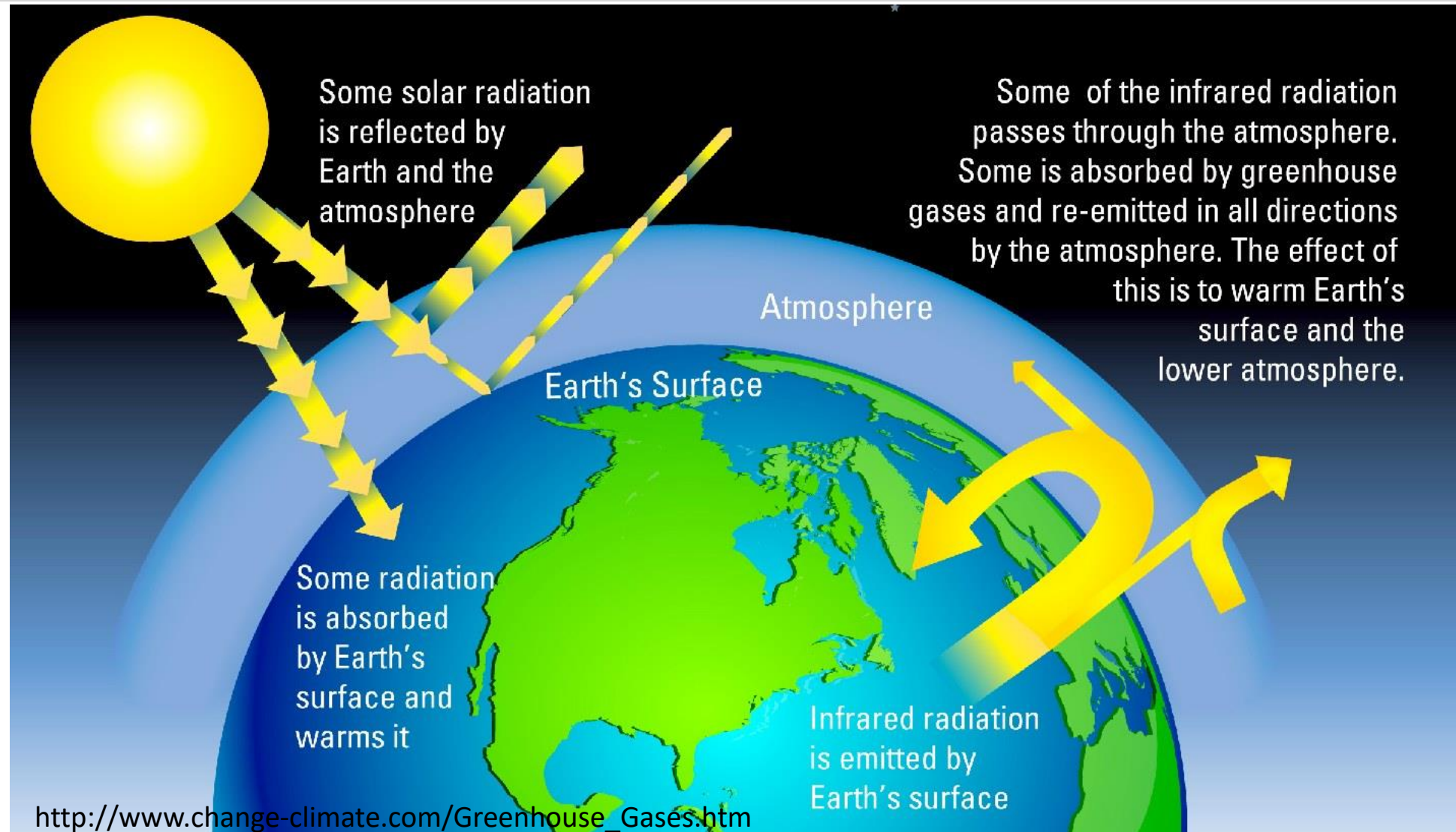


- © GTS
- Automobiles
 - Trucks
 - Aviation
 - Marine
 - Railways

10 Indikator Jejak Manusia pada Perubahan Iklim



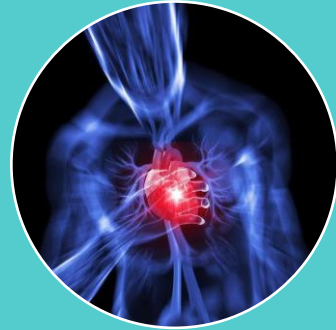
EFEK GAS RUMAH KACA



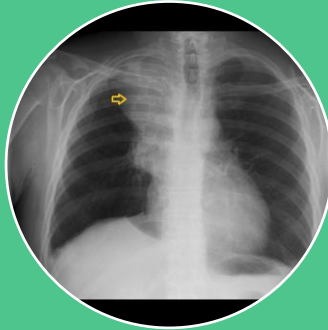
DAMPAK EMISI TERHADAP MANUSIA



ISPA



PENYAKIT
JANTUNG



KANKER
PARU



GANGGUAN
MENTAL



KEGUGURAN
JANIN



**TERIMA
KASIH**

